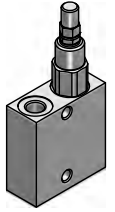
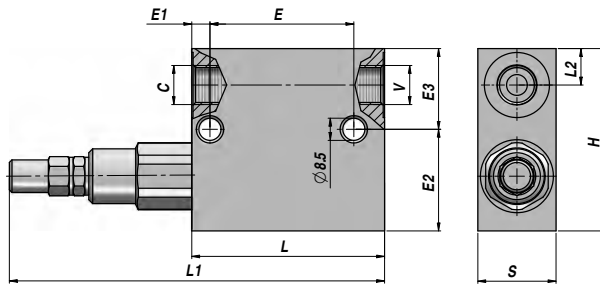
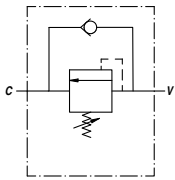


VALVOLA DI SEQUENZA
SEQUENCE VALVE

VS2C



Codice Code	C BSP	V BSP	Q MAX l/min	P MAX bar	Tipo Type	L	L1	L2	E	E1	E2	E3	H	S	kg
V1390.0640	3/8"	3/8"	35	350	VS2C 3/8" C	74	146	14	55	7	39	31	70	30	1,17
V1390.0660	1/2"	1/2"	70	350	VS2C 1/2" C	80	152	15	55	7	37	33	70	30	1,13
V1390.D665	3/4"	3/4"	110	400	VS2C 3/4" D	100	164	20	80	10	50	50	100	40	2,90

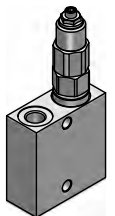
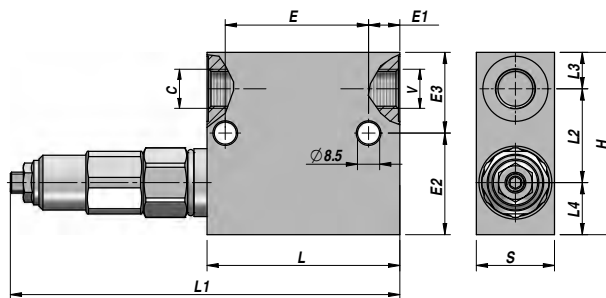
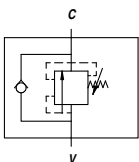
MOLLA - SPRING VS2C 3/8" - 1/2": A= 10:50 bar - B= 20:100 bar - C= 30:180 bar (Standard) - D= 50:250 bar - E= 80:300 bar
 MOLLA - SPRING VS2C 3/4" : C= 20:200 bar - D= 50:400 bar (Standard)

MATERIALE CORPO : ACCIAIO
 BODY MATERIAL : STEEL

MONTAGGIO IN LINEA
 LINE MOUNTING

VALVOLA DI SEQUENZA CON ANNULLAMENTO DELLA PRESSIONE PRIMARIA
 SEQUENCE VALVE WITH ZERO SETTING ON PRIMARY PRESSURE

VSQ-APP



Codice Code	C BSP	V BSP	Q MAX l/min	P MAX bar	Tipo Type	L	L1	L2	L3	L4	E	E1	E2	E3	H	S	kg
V1390.0642	3/8"	3/8"	35	350	VSQAPP 3/8" C	74	149	36	14	20	55	12	39	31	70	30	1,25
V1390.0662	1/2"	1/2"	70	350	VSQAPP 1/2" C	80	155	36	15	19	55	18	37	33	70	30	1,28
V1390.0667	3/4"	3/4"	110	400	VSQAPP 3/4" Q	100	190	55	20	25	80	10	50	50	100	40	2,85

MOLLA - SPRING (3/8" - 1/2") : A= 10:50 bar - B= 20:100 bar - C= 10:180 bar (Standard) - D= 50:250 bar - E= 80:300 bar
 MOLLA - SPRING (3/4") : N= 20:200 bar - Q= 50:400 bar (Standard)

MATERIALE CORPO : ACCIAIO
 BODY MATERIAL : STEEL

MONTAGGIO IN LINEA
 LINE MOUNTING