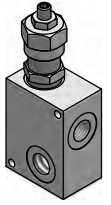
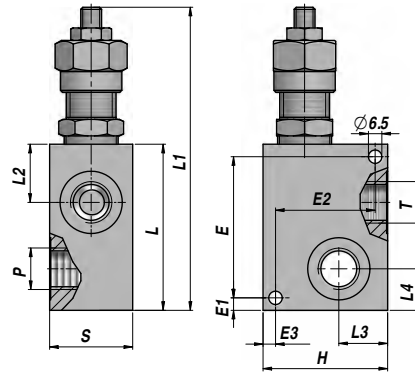
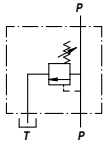


VALVOLA LIMITATRICE DI PRESSIONE  
RELIEF VALVE

VMD 80



Codice Code	P BSP	T BSP	Q MAX l/min	P MAX bar	Tipo Type	L	L1 max	L2	L3	L4	E	E1	E2	E3	H	S	kg
VAG002.0830B1	1/2"	1/2"	80	210	VMD A80-030-B1	80	157	28	23.5	20	68	6	48	6	60	40	0,72
VAG002.0840B1	3/4"	3/4"	80	210	VMD A80-040-B1	80	157	28	23.5	20	68	6	48	6	60	40	0,72

MOLLA - SPRING : A= 5:50 bar - B= 20:260 bar ( Standard ) - C= 120:350 bar

1= Vite - Screw ( Standard )

REGOLAZIONE - SETTING : 2= Volantino - Knob

3= Vite + cappello - Screw + protection cup



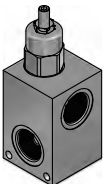
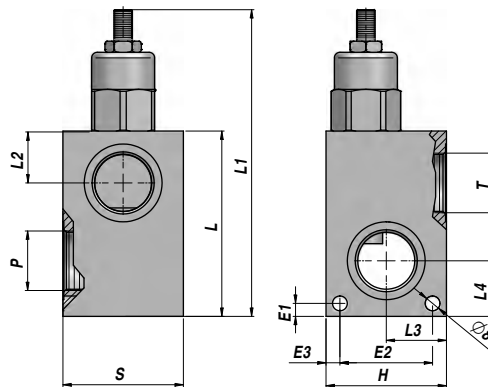
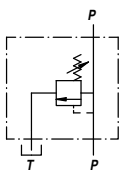
A RICHIESTA - ON REQUEST: ACCIAIO - STEEL (VMD-S - 350 bar)

MATERIALE CORPO : ALLUMINIO  
BODY MATERIAL : ALUMINIUM

MONTAGGIO IN LINEA  
LINE MOUNTING

VALVOLA LIMITATRICE DI PRESSIONE (DIFFERENZIALE)  
RELIEF VALVE (DIFFERENTIAL TYPE)

VMD-S 150



Codice Code	P BSP	T BSP	Q MAX l/min	P MAX bar	Tipo Type	L	L1 max	L2	L3	L4	E1	E2	E3	H	S	kg
VSG002.1550B1	1"	1"	150	350	VMD-S150-050-B1	100	166	28	32.5	30	7	50	7.5	65	65	2,76
VSG002.1560B1	1"1/4	1"1/4	150	350	VMD-S150-060-B1	100	166	28	32.5	30	7	50	7.5	65	65	2,43

MOLLA - SPRING : B= 30:350 bar ( Standard )

1= Vite - Screw (Standard)

REGOLAZIONE - SETTING : 2= Volantino - Knob

3= Vite + cappello - Screw + protection cup



MATERIALE CORPO : ACCIAIO  
BODY MATERIAL : STEEL

MONTAGGIO IN LINEA  
LINE MOUNTING