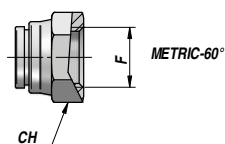


**RV415**

**NEW!**

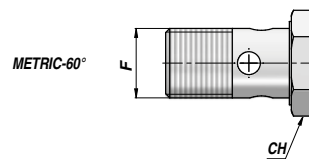
**TAPPO FEMMINA GIREVOLE  
FEMALE PLUG**



Codice Code	F	CH	kg x 100
RV415.1400	M14x1.5	19	2,35
RV415.1600	M16x1.5	22	3,50
RV415.1800	M18x1.5	24	4,40
RV415.2200	M22x1.5	27	5,50
RV415.2600	M26x1.5	32	9,55

**RV432**

**BULLONE FORATO  
BOLT FOR BANJO**

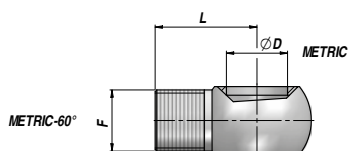


Codice Code	F	CH	kg x 100
RV432.1010 <b>NEW!</b>	M10x1	14	1,25
RV432.1215 <b>NEW!</b>	M12x1.5	17	2,41
RV432.1415	M14x1.5	19	3,72
RV432.1615	M16x1.5	22	5,00
RV432.1815	M18x1.5	24	7,10
RV432.2015 <b>NEW!</b>	M20x1.5	27	8,60
RV432.2215	M22x1.5	27	10,25

MATERIALE : ACCIAIO ( A RICHIESTA : ACCIAIO INOX AISI 316 ) - MATERIAL : STEEL ( ON REQUEST : STAINLESS STEEL AISI 316 )

**RV453**

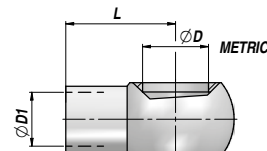
**OCCHIO FILETTATO  
THREADED BANJO**



Codice Code	ØD	F	L	kg x 100
RV453.1212 <b>NEW!</b>	12	M12x1.5	20~	2,50
RV453.1414	14	M14x1,5	24~	3,00
RV453.1616	16	M16x1,5	28~	4,20
RV453.1818	18	M18x1,5	32~	6,00
RV453.2020 <b>NEW!</b>	20	M20x1.5	35~	6,20
RV453.2222	22	M22x1,5	35~	6,40

**RV532**

**OCCHIO A SALDARE  
WELDABLE BANJO**



Codice Code	ØD	ØD1	L	kg x 100
RV532.1208 <b>NEW!</b>	12	8	22~	1,75
RV532.1410	14	10	24~	2,00
RV532.1412 <b>NEW!</b>	14	12	24~	1,90
RV532.1610 <b>NEW!</b>	16	10	28~	4,00
RV532.1612	16	12	28~	3,54
RV532.1815	18	15	29~	6,00
RV532.2014 <b>NEW!</b>	20	14	32~	8,53
RV532.2218	22	18	32~	7,50

MATERIALE : ACCIAIO ( A RICHIESTA : ACCIAIO INOX AISI 316 ) - MATERIAL : STEEL ( ON REQUEST : STAINLESS STEEL AISI 316 )