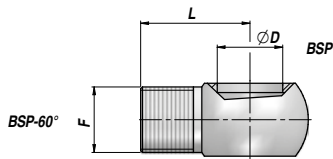


RV454

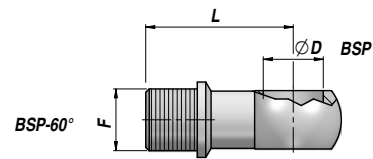
**OCCHIO FILETTATO
THREADED BANJO**



Codice Code	ØD BSP	F BSP	L	kg x 100
RV454.0303 NEW!	1/8"	1/8"	24~	2,00
RV454.0404	1/4"	1/4"	25~	2,91
RV454.0604 NEW!	3/8"	1/4"	25~	3,67
RV454.0606	3/8"	3/8"	28~	3,93
RV454.0804 NEW!	1/2"	1/4"	25~	6,50
RV454.0806	1/2"	3/8"	28~	7,00
RV454.0808	1/2"	1/2"	32~	7,60
RV454.1208	3/4"	1/2"	32~	14,40
RV454.1212	3/4"	3/4"	40~	16,80
RV454.1612 NEW!	1"	3/4"	45~	24,21
RV454.1616	1"	1"	44~	31,40

RV451

**OCCHIO FILETTATO CON BATTUTA
THREADED BANJO WITH COLLAR**

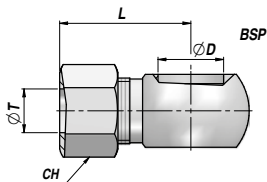


Codice Code	ØD BSP	F BSP	L	kg x 100
RV451.0404	1/4"	1/4"	30~	3,60
RV451.0604	3/8"	1/4"	40~	5,40
RV451.0606	3/8"	3/8"	40~	6,50
RV451.0806	1/2"	3/8"	45~	10,10
RV451.0808	1/2"	1/2"	55~	11,60
RV451.1212	3/4"	3/4"	55~	21,60

MATERIALE : ACCIAIO (A RICHIESTA : ACCIAIO INOX AISI 316) - MATERIAL : STEEL (ON REQUEST : STAINLESS STEEL AISI 316)

RV536

**OCCHIO + DADO E OGIVA
BANJO + NUT AND CUTTING RING**

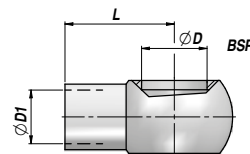


DIN 2353

Codice Code	ØD BSP	ØT	L	CH	kg x 100
RV536.0412	1/4"	12	43,5	22	7,00
RV536.0612	3/8"	12	38,5	22	7,00
RV536.0815	1/2"	15	44,5	27	14,00

RV531

**OCCHIO A SALDARE
WELDABLE BANJO**



Codice Code	ØD BSP	ØD1	L	kg x 100
RV531.0300 NEW!	1/8"	6	19~	1,00
RV531.0408 NEW!	1/4"	8	24~	2,77
RV531.0400	1/4"	10	24~	2,87
RV531.0412 NEW!	1/4"	12	24~	2,80
RV531.0610	3/8"	10	28~	4,36
RV531.0600	3/8"	12	28~	3,81
RV531.0614 NEW!	3/8"	14	28~	3,80
RV531.0812 NEW!	1/2"	12	32~	7,60
RV531.0814	1/2"	14	32~	6,80
RV531.0800	1/2"	15	32~	6,55
RV531.0816 NEW!	1/2"	16	32~	6,27
RV531.1200	3/4"	20	40~	16,87
RV531.1600	1"	25	45~	33,20

MATERIALE : ACCIAIO (A RICHIESTA : ACCIAIO INOX AISI 316) - MATERIAL : STEEL (ON REQUEST : STAINLESS STEEL AISI 316)