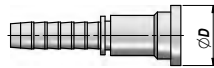


FLANGIA DIRITTA SAE 3000 PSI
STRAIGHT FLANGE SAE 3000 PSI

R1260

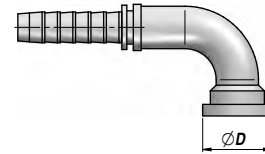


ONE-PIECE

Codice Code	Tubo Hose			Ø Flangia Ø Flange	ØD	kg x 100
	size	inch	DN			
R1260.0808	08	1/2"	13	1/2"	30.2	11,60
R1260.0812	08	1/2"	13	3/4"	38.1	16,40
R1260.1212	12	3/4"	20	3/4"	38.1	21,07
R1260.1216	12	3/4"	20	1"	44.5	25,00
R1260.1616	16	1"	25	1"	44.5	32,49
R1260.1620	16	1"	25	1 1/4"	50.8	36,80
R1260.2020	20	1 1/4"	32	1 1/4"	50.8	50,00
R1260.2024	20	1 1/4"	32	1 1/2"	60.3	58,50
R1260.2424	24	1 1/2"	38	1 1/2"	60.3	65,35
R1260.2432	24	1 1/2"	38	2"	71.4	79,00
R1260.3232	32	2"	50	2"	71.4	105,80

FLANGIA 90° SAE 3000 PSI
90° FLANGE SAE 3000 PSI

R1060



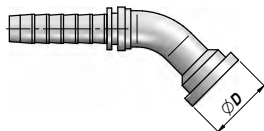
ONE-PIECE

Codice Code	Tubo Hose			Ø Flangia Ø Flange	ØD	kg x 100
	size	inch	DN			
R1060.0808	08	1/2"	13	1/2"	30.2	11,22
R1060.0812	08	1/2"	13	3/4"	38.1	16,80
R1060.1212	12	3/4"	20	3/4"	38.1	23,50
R1060.1216	12	3/4"	20	1"	44.5	29,60
R1060.1616	16	1"	25	1"	44.5	41,95
R1060.1620	16	1"	25	1 1/4"	50.8	48,60
R1060.2020	20	1 1/4"	32	1 1/4"	50.8	57,37
R1060.2024	20	1 1/4"	32	1 1/2"	60.3	66,06
R1060.2424	24	1 1/2"	38	1 1/2"	60.3	98,50
R1060.2432	24	1 1/2"	38	2"	71.4	112,60
R1060.3232	32	2"	50	2"	71.4	187,80

MATERIALE : ACCIAIO (A RICHIESTA : ACCIAIO INOX AISI 316) - MATERIAL : STEEL (ON REQUEST : STAINLESS STEEL AISI 316)

FLANGIA 45° SAE 3000 PSI
45° FLANGE SAE 3000 PSI

R1160

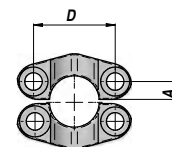


ONE-PIECE

Codice Code	Tubo Hose			Ø Flangia Ø Flange	ØD	kg x 100
	size	inch	DN			
R1160.0808	08	1/2"	13	1/2"	30.2	11,71
R1160.0812	08	1/2"	13	3/4"	38.1	15,67
R1160.1212	12	3/4"	20	3/4"	38.1	23,30
R1160.1216	12	3/4"	20	1"	44.5	28,50
R1160.1616	16	1"	25	1"	44.5	41,50
R1160.1620	16	1"	25	1 1/4"	50.8	48,50
R1160.2020	20	1 1/4"	32	1 1/4"	50.8	58,01
R1160.2024	20	1 1/4"	32	1 1/2"	60.3	68,50
R1160.2424	24	1 1/2"	38	1 1/2"	60.3	99,70
R1160.2432	24	1 1/2"	38	2"	71.4	111,70
R1160.3232	32	2"	50	2"	71.4	189,40

SEMIFLANGE SAE 3000 PSI
SPLIT FLANGE SAE 3000

R5003



Codice Code	Per flangia For flange inch	D	A	kg x 100
R5003.0800	1/2"	38.1	8.7	12,80
R5003.1200	3/4"	47.6	11.1	16,65
R5003.1600	1"	52.4	13.1	21,13
R5003.2000	1 1/4"	58.7	15.1	30,52
R5003.2400	1 1/2"	69.9	17.9	46,77
R5003.3200	2"	77.8	21.4	52,44

MATERIALE : ACCIAIO (A RICHIESTA : ACCIAIO INOX AISI 316) - MATERIAL : STEEL (ON REQUEST : STAINLESS STEEL AISI 316)