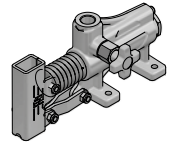
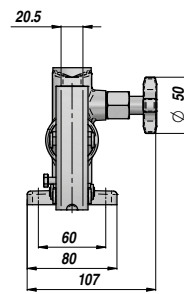
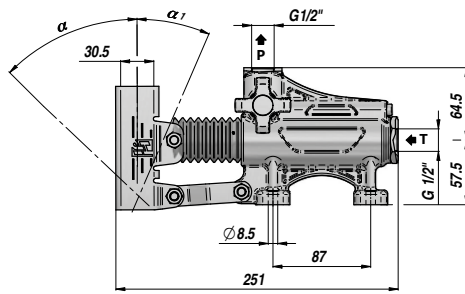
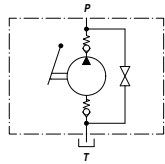


**POMPA A MANO CON VOLANTINO DI SCARICO**  
**HAND PUMP WITH LOWERING VALVE**

**NEW!** **PAM-S 40**

**NON PREDISPOSTA PER SERBATOIO**  
**NOT SUITABLE FOR OIL TANK**



Codice Code	Tipo Type	cm3/ciclo cm3/cycle	P MAX bar	α	α <sub>1</sub>	Temperatura d'esercizio Working Temperature	kg
PAM0144001	PAM-S 40	42	280	50°	20°	-20°C +80°C	3,33

Funzionamento D.E. per cilindro S.E. - *Double-stroke for a S.A. cylinder*

A RICHIESTA - *ON REQUEST:*

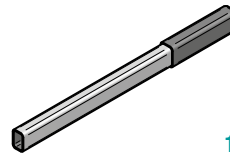
PAMX-S = POMPA CON SUPPORTO PER LEVA TONDA - *HAND PUMP WITH ROUND LEVER HOLDER*

FPM = GUARNIZIONI IN VITON - *VITON SEALS*

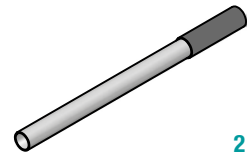
VMQ = GUARNIZIONI IN SILICONE - *FLUORINE-SILICONE SEALS*

**LEVE - LEVERS**

Codice Code	Dimensioni Sizes	TYPE	kg
* PAM0290000	20 x 30 x 600	1	0,71
PAM0290900	20 x 30 x 900	1	1,41
PAM0291000	20 x 30 x 1000	1	1,55
PM00290100	Ø27 x 600 ( PAMX )	2	0,91



1



2

\* LEVA STANDARD - *STANDARD HAND LEVER*

**KIT RICAMBI - SPARE PARTS**

Codice Code	Descrizione Description	N°
PAMJVS1245	Kit valvola di scarico <i>Lowering valve kit</i>	1
PAMJV02000	Kit aspirazione <i>Suction valve kit</i>	2
PAMJB02040	Kit bielle <i>Conrod kit</i>	3
PAMJ010001	Supporto leva <i>Hand lever holder</i>	4
PAMJPS4045	Kit pistone+stelo <i>Rod Piston assembled kit</i>	5
PAMJ020015	Soffietto <i>Bellow</i>	6
PAMGT00040	Kit guarnizioni standard <i>Standard seal kits</i>	7

