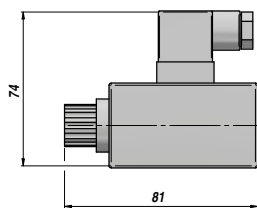
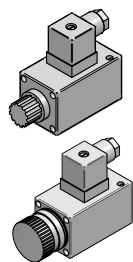


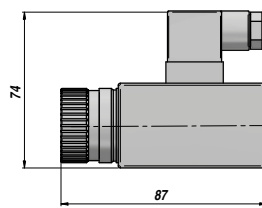
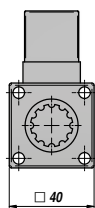
K5

NEW!

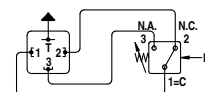
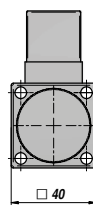
PRESSOSTATO REGOLABILE
ADJUSTABLE PRESSURE SWITCH



K



KP



Codice Code	Tipo Type	Campo di Regolazione Setting Range	Esecuzione Execution	P MAX bar	Connessione Connection	kg	
APIK530000	K53	2 > 40 bar	Pistons	200	1/4" BSP femmina o collegamento diretto a pannello Cetop	0,35	
APIK540000	K54	5 > 100 bar		300		0,35	
APIK550000	K55	20 > 200 bar		400		0,35	
APIK570000	K57	30 > 300 bar		500		0,35	
APIK590000	K59	40 > 400 bar		600		0,35	
APIK53P000	K53-P	2 > 40 bar		200		1/4" BSP female or direct connection to a Cetop panel	0,40
APIK54P000	K54-P	5 > 100 bar		300		0,40	
APIK55P000	K55-P	20 > 200 bar		400		0,40	
APIK57P000	K57-P	30 > 300 bar		500		0,40	
APIK59P000	K59-P	40 > 400 bar		600		0,40	

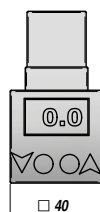
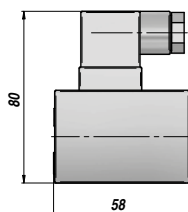
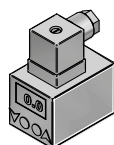
Temperatura d'esercizio - Working temperature : -20°C - +80°C

MATERIALE CORPO : ALLUMINIO
BODY MATERIAL : ALUMINIUM

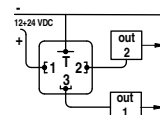
KLV5

NEW!

PRESSOSTATO ELETTRONICO VISUALIZZATO
ELECTRONIC PRESSURE SWITCH DISPLAY



+12/24 VDC = Pin 1
GND = Pin 2
NC = Pin 3
NA = Pin 4



Codice Code	Tipo Type	Campo di Regolazione Setting Range	Esecuzione Execution	P MAX bar	Filetto Thread BSP	kg
APIKLV5010	KLV50.1-B-M3	0 > 2 bar	B-M3 **	7.5	1/4"	0,43
APIKLV5000	KLV50-B-M3	0 > 5 bar		12.0		0,43
APIKLV5100	KLV51-B-M3	0 > 10 bar		25.0		0,43
APIKLV5200	KLV52-B-M3	0 > 20 bar		50.0		0,43
APIKLV5300	KLV53-B-M3	0 > 50 bar		120.0		0,43
APIKLV5400	KLV54-B-M3	0 > 100 bar		250.0		0,43
APIKLV5500	KLV55-B-M3	0 > 200 bar		500.0		0,43
APIKLV5900	KLV59-B-M3	0 > 400 bar		600.0		0,43
APIKLV5960	KLV59.6-B-M3	0 > 600 bar		800.0		0,43

** B-M3 = Contatti separati : Aperto + Chiuso (NA + NC) - Con connettore

** B-M3 = Separate contacts : Open + Closed (NO + NC) - With connector

Temperatura d'esercizio - Working temperature : -20°C - +80°C

MATERIALE CORPO : ALLUMINIO
BODY MATERIAL : ALUMINIUM