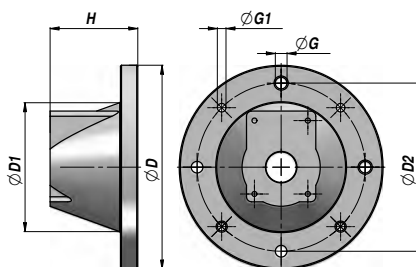
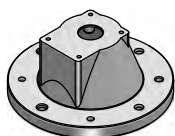


HL

LANTERNA PER MOTORE ELETTRICO  
BELL-HOUSING TO CONNECT ELECTRIC MOTOR



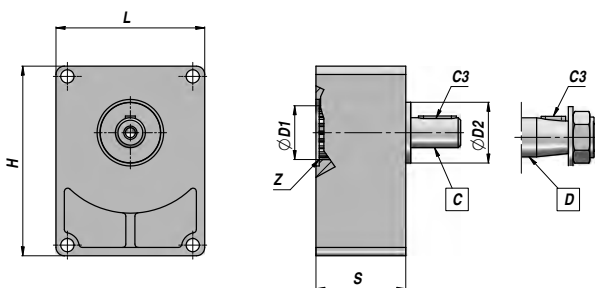
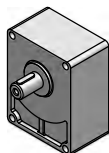
Codice Code	Tipo Type	ØD	Motore Elettrico Electric Motor kW	Pompa Pump	ØD1	H	ØG	ØG1	ØD2	kg
AH30100200	HL2	160	0.27 - 0.37	GR.1	110	70	9.0	M8	130	0,44
AH30202800	HL5L	200	0.55 - 0.75 - 1.1 - 1.5	GR.1	130	86	11.5	M10	165	0,67
AH30203500	HL7SL	"	"	GR.2/2T	130	95	11.5	M10	165	0,65
AH30302500	HL8/1L	250	2.2 - 3 - 4	GR.1	176	115	13.0	M12	215	1,22
AH30302600	HL9L	"	"	GR.2/2T	176	115	13.0	M12	215	1,21
AH15050005	HL11	"	"	GR.3	176	130	13.0	M12	215	1,20
AH30400800	HL12	300	5.5 - 7.5	GR.2/2T	229	148	13.0	M12	265	1,99
AH30400900	HL13	"	"	GR.3	229	148	13.0	M12	265	1,99
AH15000001	HL15	350	11 - 15	GR.2/2T	210	187	18.0	ø18	300	3,38
AH30509200	HL16	"	11 - 15 - 18.5 - 22	GR.3	210	187	18.0	ø18	300	3,38

DISPONIBILI ANCHE CON ANELLO DI RIDUZIONE - ALSO AVAILABLE WITH ADAPTER RING

MATERIALE : ALLUMINIO  
MATERIAL : ALUMINIUM

STSU

SUPPORTO TIROCINGHIA  
BELT PULLEY SUPPORT



Codice Code	Tipo Type	Pompa Pump	ØD1	Z DIN 5482	ØD2	Albero Shaft	C3	L	H	S	kg
BU12010002	STSU/1 - C	GR.1	25.4	Z14 - 25x22	50.8	C = ø18	6x6x25	75.0	93.0	40.0	0,80
BU12020001	STSU/2 - C	GR.2	36.5	Z14 - 25x22	36.5	C = ø18	6x6x30	89.4	114.0	54.5	1,40
BU12020007	STSUR/2 - C	GR.2	36.5	Z15 - 28x25	50.8	C = ø22	6x6x40	89.4	114.0	52.0	1,75
BU12030001	STSU/3 - C	GR.3	50.8	Z18 - 35x31	50.8	C = ø24	8x7x40	123.5	153.2	52.0	2,20
BU12010001	STSU/1 - D	GR.1	25.4	Z14 - 25x22	50.8	D = Conico Tapered 1:8	4 x 6.5	75.0	93.0	40.0	0,80
BU12020004	STSU/2 - D	GR.2	36.5	Z14 - 25x22	36.5		4 x 6.5	89.4	114.0	54.5	1,40
BU12020008	STSUR/2 - D	GR.2	36.5	Z15 - 28x25	50.8		4 x 6.5	89.4	114.0	52.0	1,75
BU12030002	STSU/3 - D	GR.3	50.8	Z18 - 35x31	50.8		4 x 7.5	123.5	153.2	52.0	2,20

MATERIALE CORPO : ALLUMINIO  
BODY MATERIAL : ALUMINIUM