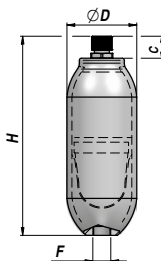
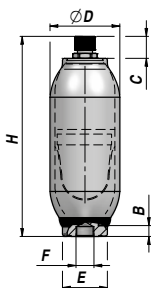
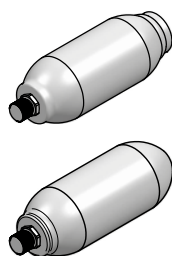


H

ACCUMULATORE IDROPNEUMATICO A MEMBRANA
DIAPHRAGM HYDROPNEUMATIC ACCUMULATOR



H990R - H3000R

Conforme a - Compliant with :
97/23/CE-PED
94/9/CE-ATEX GII Cat2
GOST-R (Russia)
SELO (China)

Codice Code	Tipo Type	P MAX	Azoto Nitrogen	H	ØD	E	B	C	F	Q MAX l/min	kg
ACH000100	H 150 R	250	lt 0.15	142	70	45	15	23	M18x1.5	40	1,20
ACH000350	H 350 R	250	lt 0.35	190	70	35	15	23	M18x1.5	35	1,70
ACH000500	H 500 R	250	lt 0.45	167	92	55	17	23	M18x1.5	50	1,90
ACH000700	H 700 R	250	lt 0.70	220	92	40	17	23	M18x1.5	40	2,70
ACH000990 NEW!	H 990 R	250	lt 0.99	251	92	-	-	23	M18x1.5	50	4,00
ACH001000	H 1000 R	250	lt 1.00	200	115	60	19	23	M18x1.5	50	3,50
ACH001400	H 1400 R	250	lt 1.40	270	115	60	19	23	M18x1.5	40	4,90
ACH002000	H 2000 R	250	lt 2.00	350	115	60	19	23	M18x1.5	40	5,80
ACH003000 NEW!	H 3000 R	250	lt 2.80	400	115	-	-	23	1/2" BSP	60	7,50
ACH004000	H 4000 R	210	lt 3.80	320	170	95	15	23	3/4" BSP	80	14,00

Temperatura d'esercizio - Working temperature : -20°C - +80°C

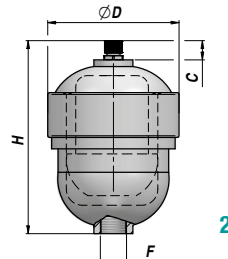
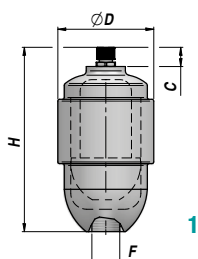
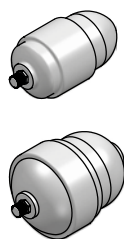
MATERIALE CORPO : ACCIAIO
BODY MATERIAL : STEEL

MATERIALE MEMBRANA : NBR
DIAPHRAGM MATERIAL : NBR

HST

NEW!

ACCUMULATORE IDROPNEUMATICO A MEMBRANA
DIAPHRAGM HYDROPNEUMATIC ACCUMULATOR



Conforme a - Compliant with :
97/23/CE-PED
94/9/CE-ATEX GII Cat2
GOST-R (Russia)
SELO (China)

Codice Code	Tipo Type	P MAX bar	Azoto Nitrogen	H	ØD	C	F	Q MAX l/min	Disegno Drawing	kg
ACHST00040	HST 0.05	300	lt 0.05	98	60	22	M18x1.5	35	1	1,10
ACHST00100	HST 0.15	300	lt 0.15	141	80	22	M18x1.5	45	1	2,10
ACHST00350	HST 0.35	300	lt 0.35	152	101	22	M18x1.5	50	1	3,20
ACHST00500	HST 0.5	300	lt 0.50	175	124	22	M18x1.5	60	1	5,00
ACHST00700	HST 0.7	300	lt 0.70	218	100	22	M18x1.5	55	1	5,50
ACHST00800	HST 0.8	300	lt 0.80	185	138	22	M18x1.5	60	2	5,80
ACHST01300	HST 1.3	300	lt 1.30	232	125	22	M18x1.5	55	1	7,90
ACHST01500	HST 1.5	300	lt 1.50	270	138	22	M18x1.5	55	2	8,70
ACHST02300	HST 2.3	300	lt 2.30	340	138	22	M18x1.5	55	2	10,50

Temperatura d'esercizio - Working temperature : -20°C - +80°C

MATERIALE CORPO : ACCIAIO
BODY MATERIAL : STEEL

MATERIALE MEMBRANA : NBR
DIAPHRAGM MATERIAL : NBR