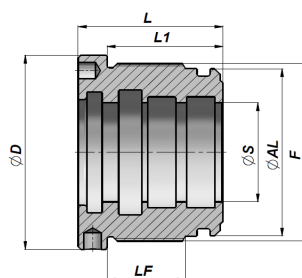


CGXX

TESTATA DI GUIDA IN INOX  
STAINLESS STEEL HEAD BUSH

| Codice<br>Code | ØAL             | ØS | ØD<br>max | F       | LF | L  | L1 | kg   | Set guarnizioni<br>Seal kits |
|----------------|-----------------|----|-----------|---------|----|----|----|------|------------------------------|
| CGXX050040020  | 40              | 20 | 50        | M44x1.5 | 19 | 40 | 32 | 0,31 | GKGCXX040020                 |
| CGXX050040025  | 40              | 25 | 50        | M44x1.5 | 19 | 40 | 32 | 0,24 | GKGCXX040025                 |
| CGXX060050025  | 50              | 25 | 60        | M54x1.5 | 22 | 43 | 35 | 0,51 | GKGCXX050025                 |
| CGXX060050030  | 50              | 30 | 60        | M54x1.5 | 22 | 43 | 35 | 0,42 | GKGCXX050030                 |
| CGXX070060030  | 60              | 30 | 70        | M64x1.5 | 27 | 50 | 40 | 0,86 | GKGCXX060030                 |
| CGXX070060035  | 60              | 35 | 70        | M64x1.5 | 27 | 50 | 40 | 0,74 | GKGCXX060035                 |
| CGXX070060040  | 60              | 40 | 70        | M64x1.5 | 27 | 50 | 40 | 0,63 | GKGCXX060040                 |
| CGXX080070035  | 70              | 35 | 80        | M74x1.5 | 27 | 50 | 40 | 1,16 | GKGCXX070035                 |
| CGXX080070040  | 70              | 40 | 80        | M74x1.5 | 27 | 50 | 40 | 1,04 | GKGCXX070040                 |
| CGXX095080040  | 80              | 40 | 95        | M85x2   | 33 | 60 | 50 | 1,90 | GKGCXX080040                 |
| CGXX095080050  | <b>NEW!</b> 80  | 50 | 95        | M85x2   | 33 | 60 | 50 | 1,55 | GKGCXX080050                 |
| CGXX115100040  | <b>NEW!</b> 100 | 40 | 115       | M105x2  | 51 | 82 | 70 | 4,51 | GKGCXX100040                 |
| CGXX115100050  | <b>NEW!</b> 100 | 50 | 115       | M105x2  | 51 | 82 | 70 | 4,03 | GKGCXX100050                 |
| CGXX115100060  | <b>NEW!</b> 100 | 60 | 115       | M105x2  | 51 | 82 | 70 | 3,40 | GKGCXX100060                 |

MATERIALE : AISI 316L ACCIAIO INOSSIDABILE

MATERIAL : AISI 316L STAINLESS STEEL

GKGCXX

KIT GUARNIZIONI PER TESTATA DI GUIDA "CGXX"  
SEAL KITS FOR "CGXX" HEAD BUSH

| Codice<br>Code | Alesaggio/Stelo<br>Bore/Rod | GAF              | GHK    | O-Ring<br>Dowty | TTI-L<br>TTI - TSE | O-Ring<br>Dowty |
|----------------|-----------------------------|------------------|--------|-----------------|--------------------|-----------------|
|                |                             |                  |        |                 |                    | GDS             |
| GKGCXX040020   | 40 / 20                     | TEF-SEAL 03-6325 | 078110 | 126             | TTI 20-28/L        | 219             |
| GKGCXX040025   | 40 / 25                     | n°2 25x30x5.6    | 098129 | 126             | TTI 25-33/L        | 219             |
| GKGCXX050025   | 50 / 25                     | n°2 25x30x5.6    | 098129 | 132             | TTI 25-35/L        | 826             |
| GKGCXX050030   | 50 / 30                     | n°2 30x35x5.6    | 118149 | 132             | TTI 30-40/1L       | 826             |
| GKGCXX060030   | 60 / 30                     | n°2 30x35x9.7    | 118149 | 138             | TTI 30-40/1L       | 832             |
| GKGCXX060035   | 60 / 35                     | n°2 35x40x9.7    | 137169 | 138             | TTI 35-45/L        | 832             |
| GKGCXX060040   | 60 / 40                     | n°2 40x45x9.7    | 157188 | 138             | TTI 40-48/L        | 832             |
| GKGCXX070035   | 70 / 35                     | n°2 35x40x9.7    | 137169 | 145             | TTI 35-45/L        | 839             |
| GKGCXX070040   | 70 / 40                     | n°2 40x45x5.6    | 157188 | 145             | TTI 40-50/3L       | 839             |
| GKGCXX080040   | 80 / 40                     | n°2 40x45x9.7    | 157188 | 149             | TTI 40-50/3L       | GDS 845         |
| GKGCXX080050   | <b>NEW!</b> 80 / 50         | n°2 50x55x9.7    | 196228 | 149             | TTI 50-60/L        | 845             |
| GKGCXX100040   | <b>NEW!</b> 100 / 40        | n°2 40x45x15     | 157188 | 153             | TTI 40-50/1L       | 621             |
| GKGCXX100050   | <b>NEW!</b> 100 / 50        | n°2 50x55x15     | 196228 | 153             | TTI 50-60/L        | 621             |
| GKGCXX100060   | <b>NEW!</b> 100 / 60        | n°2 60x65x15     | 236267 | 153             | TTI 60-72/L        | 621             |