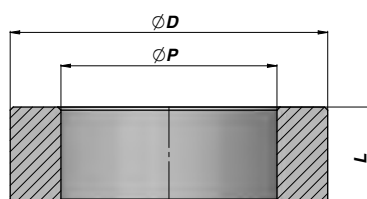
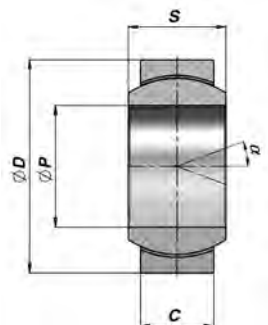
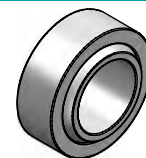


ANELLO A SALDARE IN INOX PER SNODO "GE TGR"
STAINLESS STEEL WELD-RING FOR "GE TGR" BALL-JOINT
CAGEX


Codice Code	Per For	ØD	L	ØP	kg
CAGEX050035	GE ø20	50	14	35	0,11
CAGEX069042	GE ø25	69	19	42	0,35
CAGEX075047	GE ø30	75	20	47	0,41
CAGEX094062	GE ø40	94	26	62	0,79

MATERIALE : AISI 316L ACCIAIO INOSSIDABILE

MATERIAL : AISI 316L STAINLESS STEEL

SNODO SFERICO RADIALE NON RICHIEDENTE MANUTENZIONE
MAINTENANCE FREE RADIAL BALL-JOINT
GE TGR


Codice Code	ØP	ØD	S	C	α	FC	kg
CGE0003603	20	35	16	12	9	41.5	0,06
CGE0003604	25	42	20	16	7	68.0	0,12
CGE0003605	30	47	22	18	6	88.0	0,16
CGE0003607	40	62	28	22	7	140.0	0,32

FC = CARICO DINAMICO AMMESSO - MAX DYNAMIC LOAD

ACCOPPIAMENTO - COUPLING : ACCIAIO/PTFE - STEEL/PTFE

MATERIALE : ACCIAIO INOSSIDABILE AISI420 - ISO 12240-1 SERIE G

MATERIAL : STAINLESS STEEL AISI420 - ISO 12240-1 SERIE G