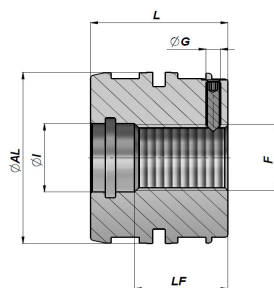



**PISTONE FILETTATO CON GRANO**  
**THREADED PISTON WITH GRUB SCREW**

NEW!

CTFS



Series P300

Codice Code	ØAL	F	LF	L	ØI	ØG	kg	Pz. Box Box Pcs.	Set guarnizioni Seal kits	
CTFS0301215	30	M12x1.5	21	29	13	M4	0,10	50	GKGCTFS03012	
CTFS0321415	32	M14x1.5	22	30	15	M4	0,12	50	GKGCTFS03214	
CTFS0351415	35	M14x1.5	25	33	15	M4	0,17	50	GKGCTFS03514	
CTFS0401615	40	M16x1.5	27	37	17	M4	0,25	50	GKGCTFS04016	
CTFS0502015	50	M20x1.5	29	41	21	M5	0,44	50	GKGCTFS05020	
CTFS0502420	50	M24x2	29	41	25	M5	0,40	50	GKGCTFS05024	
CTFS0602420	60	M24x2	32	47	25	M5	0,76	25	GKGCTFS06024	
CTFS0632420	63	M24x2	32	47	25	M5	0,86	25	GKGCTFS06324	
CTFS0633320	63	M33x2	32	47	35	M5	0,71	25	GKGCTFS06333	
CTFS0702720	70	M27x2	35	50	28	M6	1,11	25	GKGCTFS07027	
CTFS0803020	80	M30x2	38	53	32	M6	1,54	20	GKGCTFS08030	
CTFS0903630	90	M36x3	41	56	38	M6	2,11	10	GKGCTFS09036	
CTFS1003930	100	M39x3	41	56	42	M8	1,54	10	GKGCTFS10039	

MATERIALE : ACCIAIO S355J2

MATERIAL : STEEL S355J2

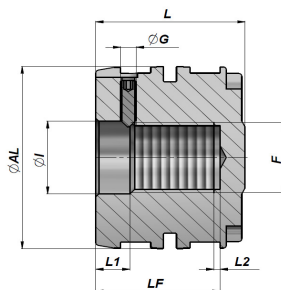
GUARNIZIONI : VEDI IN SEGUITO

SEALS : SEE BELOW


**PISTONE FILETTATO CHIUSO CON GRANO**  
**THREADED CLOSED PISTON WITH GRUB SCREW**

NEW!

CTC



Series P300

Codice Code	ØAL	F	LF	L	ØI	L1	L2	ØG	kg	Pz. Box Box Pcs.	Set guarnizioni Seal kits	
CTC040016014	40	M14x1,5	30	39	16	10	2	M4	0,27	50	GKGCTC0400	
CTC040020018	40	M18x1,5	30	39	20	10	2	M4	0,25	50	GKGCTC0400	
CTC050020018	50	M18x1,5	36	46	20	11	2	M5	0,51	50	GKGCTC0500	
CTC050025024	50	M24x2	36	46	25	11	2	M5	0,46	50	GKGCTC0500	
CTC060025024	60	M24x2	38	48	25	11	2	M5	0,79	25	GKGCTC0600	
CTC060030027	60	M27x2	38	48	30	11	2	M5	0,74	25	GKGCTC0600	
CTC063025024	63	M24x2	38	48	25	11	2	M5	0,88	25	GKGCTC0630	
CTC063030027	63	M27x2	38	48	30	11	2	M5	0,83	25	GKGCTC0630	
CTC070030027	70	M27x2	41	51	30	12	2	M6	1,14	25	GKGCTC0700	
CTC070035033	70	M33x2	41	51	35	12	2	M6	1,06	25	GKGCTC0700	
CTC080030027	80	M27x2	41	54	30	12	2	M6	1,64	20	GKGCTC0800	
CTC080035033	80	M33x2	41	54	35	12	2	M6	1,55	20	GKGCTC0800	
CTC090035033	90	M33x2	46	59	35	12	2	M6	2,24	10	GKGCTC0900	
CTC090040039	90	M39x3	45	59	40	12	3	M6	2,19	10	GKGCTC0900	
CTC100040039	100	M39x3	54	68	40	12	3	M8	3,24	10	GKGCTC1000	
CTC100050048	100	M48x3	54	68	50	12	3	M8	2,98	10	GKGCTC1000	

MATERIALE : ACCIAIO S355J2

MATERIAL : STEEL S355J2

GUARNIZIONI : VEDI IN SEGUITO

SEALS : SEE BELOW