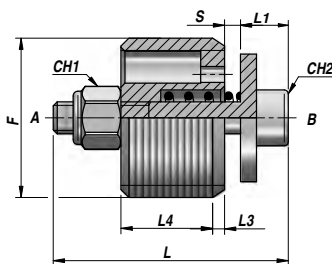
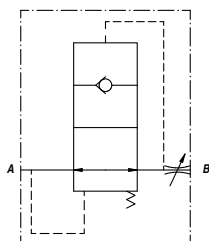


VALVOLA PARACADUTE
HOSE BURST VALVE

VUBA



Codice Code	F BSP	Q MAX l/min	P MAX bar	S	Q STD l/min	Tipo Type	L	L1	L3	L4	CH1	CH2	kg x 100
VCG390.100800	1/4"	29	350	0.8	15.5	VUBA 010 - 0.8	19	5.0	1.0	7.0	5.5	2.5	1,00
VCG390.201500	3/8"	45	350	1.5	35.5	VUBA 020 - 1.5	23	5.0	1.5	9.5	5.5	2.5	1,50
VCG390.301800	1/2"	67	350	1.8	59.0	VUBA 030 - 1.9	29	6.0	1.5	11.5	7.0	3.0	2,50
VCG390.402200	3/4"	169	350	2.2	149.0	VUBA 040 - 2.2	34	6.0	2.5	15.5	7.0	3.0	4,50
VCG390.502600	1"	223	350	2.6	190.0	VUBA 050 - 2.6	40	8.5	1.5	18.5	8.0	4.0	9,80

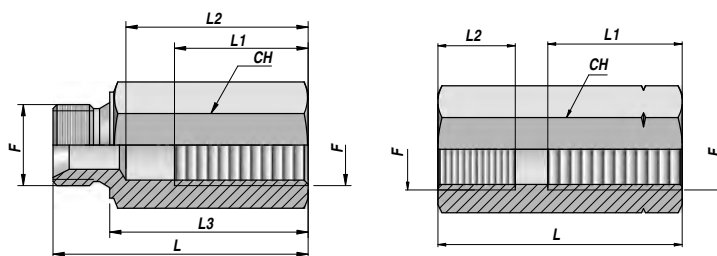
S = APERTURA STANDARD - STANDARD OPENING
SUPERFICI DI TENUTA LAPPATE - LAPPED TIGHT SURFACES

MATERIALE CORPO : ACCIAIO
BODY MATERIAL : STEEL

CARTUCCIA
CARTRIDGE

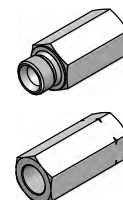
COLLETTORE PER VALVOLA "VUBA"
"VUBA" VALVE ADAPTER

CMF x VUBA CFF x VUBA



TYPE CMF

TYPE CFF



Codice Code	F BSP	P MAX bar	Tipo Type	L	L1	L2	L3	CH	kg x 100
MASCHIO-FEMMINA MALE-FEMALE									
VCG391.100000	1/4"	350	CMFxVUBA-010	50	23	31	38	19	7,00
VCG391.200000	3/8"	350	CMFxVUBA-020	60	30	43	48	22	9,50
VCG391.300000	1/2"	350	CMFxVUBA-030	63	33	45	49	27	14,70
VCG391.400000	3/4"	300	CMFxVUBA-040	75	36	50	59	32	22,50
VCG391.500000	1"	250	CMFxVUBA-050	88	46	60	70	41	42,50
FEMMINA-FEMMINA FEMALE-FEMALE									
VCG392.100000	1/4"	350	CFFxVUBA-010	50	20	12	-	19	7,00
VCG392.200000	3/8"	350	CFFxVUBA-020	58	27	14	-	22	9,80
VCG392.300000	1/2"	350	CFFxVUBA-030	60	33	19	-	27	14,50
VCG392.400000	3/4"	300	CFFxVUBA-040	76	36	19	-	32	22,20
VCG392.500000	1"	250	CFFxVUBA-050	85	46	18	-	41	43,50

MATERIALE : ACCIAIO
MATERIAL : STEEL