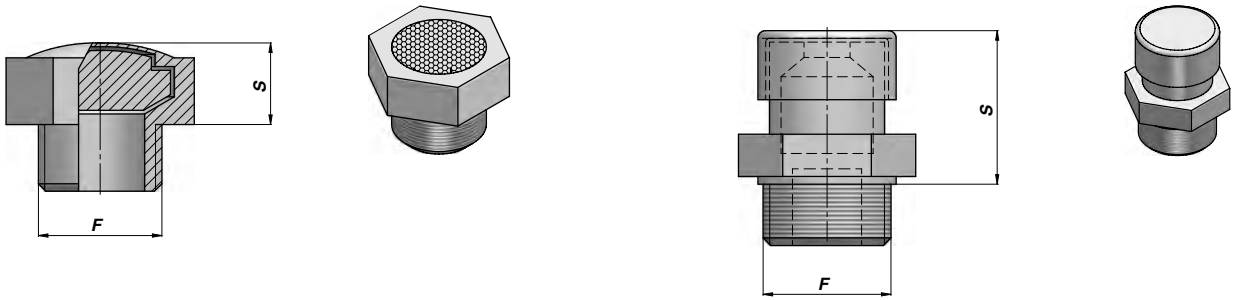


SFIATO ARIA
AIR PLUG

ASEP/ATS



| Codice Code | F BSP | S | kg x100 |
|----------------|----------|----|---------|
| ASEP030000 | 1/8" | 7 | 1,00 |
| ASEP040000 | 1/4" | 8 | 1,20 |
| ASEP060000 | 3/8" | 9 | 2,00 |
| ASEP080000 | 1/2" | 9 | 2,30 |
| ASEP120000 | 3/4" | 11 | 4,00 |
| ASEP160000 | 1" | 12 | 6,00 |

| Codice Code | F BSP | S | kg x100 |
|----------------|----------|----|---------|
| ATS31A0030 | 1/8" | 15 | 3,00 |
| ATS31A0040 | 1/4" | 20 | 4,00 |
| ATS31A0060 | 3/8" | 19 | 4,50 |
| ATS31A0080 | 1/2" | 19 | 6,00 |
| ATS31A0120 | 3/4" | 23 | 15,00 |
| ATS31A0160 | 1" | 30 | 24,00 |

MATERIALE CORPO : OTTONE
BODY MATERIAL : BRASS

FILTRO : BRONZO SINTERIZZATO
FILTER : SINTERED BRONZE

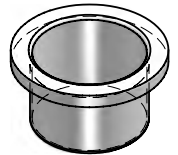
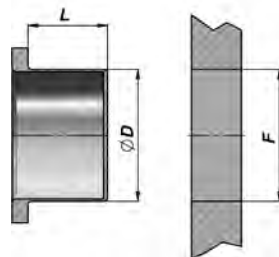
MATERIALE CORPO : OTTONE
BODY MATERIAL : BRASS

FILTRO : BRONZO SINTERIZZATO
FILTER : SINTERED BRONZE

CAPPUCCIO : ACCIAIO ZINCATO
CAP : ZINC PLATED STEEL

PROTEZIONE PER FORI FILETTATI
CAP FOR THREADED HOLES

APG/APM



| Codice Code | F BSP | ØD | L |
|----------------|----------|------|------|
| APG0300000 | 1/8" | 9,0 | 7,5 |
| APG0400000 | 1/4" | 12,0 | 9,0 |
| APG0600000 | 3/8" | 15,5 | 9,5 |
| APG0800000 | 1/2" | 19,0 | 10,5 |
| APG1200000 | 3/4" | 25,0 | 12,0 |
| APG1600000 | 1" | 31,0 | 10,5 |
| APG2000000 | 1"1/4 | 39,5 | 11,0 |
| APG2400000 | 1"1/2 | 46,0 | 10,5 |
| APG3200000 | 2" | 57,5 | 13,5 |

| Codice Code | F | ØD | L |
|----------------|---------|------|------|
| APM1215000 | M12x1,5 | 10,5 | 8,0 |
| APM1415000 | M14x1,5 | 13,0 | 9,5 |
| APM1615000 | M16x1,5 | 15,0 | 9,5 |
| APM1815000 | M18x1,5 | 17,0 | 10,5 |
| APM2015000 | M20x1,5 | 19,0 | 10,5 |
| APM2215000 | M22x1,5 | 21,0 | 11,0 |

MATERIALE : POLIETILENE L.D.
MATERIAL : POLYETHYLENE L.D.