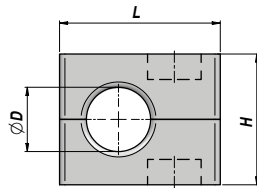
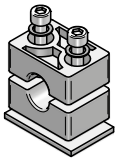
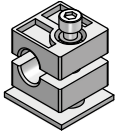


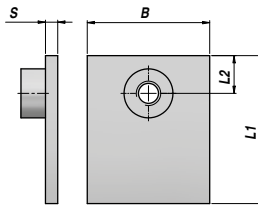
ADS

NEW!

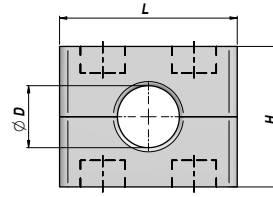
COLLARE FERMATUBO - SERIE STANDARD (POLIPROPILENE)  
CLAMP - STANDARD SERIES (POLYPROPYLENE)



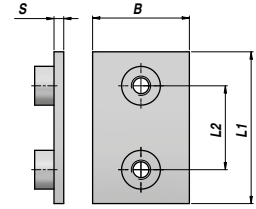
C1



P1



C2-C8



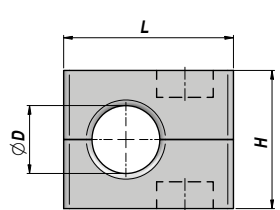
P2-P8

CORPO COLLARE CLAMP BODY						PIASTRA A SALDARE WELD PLATE						VITE TC-EI SOCKET CAP SCREW ISO 4762			RONDELLA WASHER			
Codice Code	Tipo Type	ØD mm	L	H	kg x100	Codice Code	Tipo Type	L1	L2	B	S	kg x100	Codice Code	Tipo Type	Size	Codice Code	Tipo Type	Pz. Pcs
ADSPPC1006		6.0			1,31													
ADSPPC1064		6.4			1,32													
ADSPPC1008		8.0			1,27													
ADSPPC1095	C1	9.5	28	27	1,25	ADP1000000	P1	31.5	10	30	3	2,61	ADVTC02000	TCEI1	1 x M6x20	ADSRP06000	RP	1
ADSPPC1010		10.0			1,20													
ADSPPC1012		12.0			1,11													
ADSPPC1127		12.7			1,08													
ADSPPC2006		6.0			1,73													
ADSPPC2064		6.4			1,68													
ADSPPC2008		8.0			1,65													
ADSPPC2095	C2	9.5	37	27	1,60	ADP2000000	P2	36	20	30	3	3,21	ADVTC02000	TCEI2	2 x M6x20	ADSRP06000	RP	2
ADSPPC2010		10.0			1,57													
ADSPPC2012		12.0			1,48													
ADSPPC2127		12.7			1,48													
ADSPPC3127		12.7			2,49													
ADSPPC3135		13.5			2,16													
ADSPPC3014		14.0			2,10													
ADSPPC3015	C3	15.0	42	33	2,04	ADP3000000	P3	42	26	30	3	3,58	ADVTC03000	TCEI3	2 x M6x25	ADSRP06000	RP	2
ADSPPC3016		16.0			1,97													
ADSPPC3172		17.2			1,91													
ADSPPC3018		18.0			1,86													
ADSPPC4019		19.0			2,96													
ADSPPC4020		20.0			2,86													
ADSPPC4213		21.3			2,76													
ADSPPC4022	C4	22.0	50	36	2,74	ADP4000000	P4	50	33	30	3	4,47	ADVTC04000	TCEI4	2 x M6x30	ADSRP06000	RP	2
ADSPPC4023		23.0			2,63													
ADSPPC4025		25.0			2,44													
ADSPPC4254		25.4			2,40													
ADSPPC5269		26.9			3,33													
ADSPPC5028		28.0			3,21													
ADSPPC5029	C5	29.0	57	42	3,14	ADP5000000	P5	60	40	30	3	4,83	ADVTC05000	TCEI5	2 x M6x35	ADSRP06000	RP	2
ADSPPC5030		30.0			3,00													
ADSPPC5032		32.0			2,82													

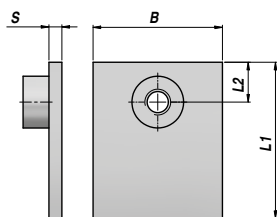
COLLARE FERMATUBO - SERIE STANDARD (POLIPROPILENE)  
CLAMP - STANDARD SERIES (POLYPROPYLENE)

NEW!

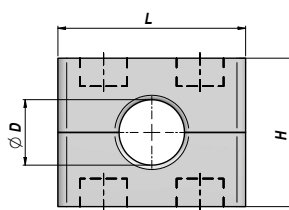
ADS



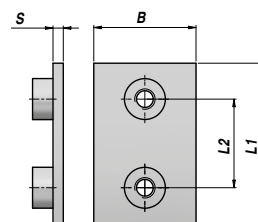
C1



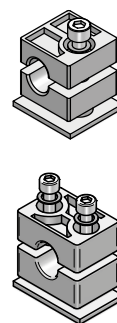
P1



C2-C8



P2-P8



CORPO COLLARE CLAMP BODY						PIASTRA A SALDARE WELD PLATE						VITE TC-EI SOCKET CAP SCREW ISO 4762			RONDELLA WASHER			
Codice Code	Tipo Type	ØD mm	L	H	kg x100	Codice Code	Tipo Type	L1	L2	B	S	kg x100	Codice Code	Tipo Type	Size	Codice Code	Tipo Type	Pz. Pcs
ADSPPC6032		32.0			6,23													
ADSPPC6337		33.7			6,03													
ADSPPC6035		35.0			5,70													
ADSPPC6038	C6	38.0	71	58	5,41	ADP6000000	P6	71	52	30	3	5,62	ADVTC06000	TCEI6	2 x M6x50	ADSRP06000	RP	2
ADSPPC6040		40.0			5,01													
ADSPPC6042		42.4			4,82													
ADSPPC6045		45.0			4,24													
ADSPPC7445		44.5			7,70													
ADSPPC7045		45.0			7,68													
ADSPPC7483		48.3			7,28													
ADSPPC7050	C7	50.0	86	66	6,70	ADP7000000	P7	88	66	30	3	7,00	ADVTC07000	TCEI7	2 x M6x60	ADSRP06000	RP	2
ADSPPC7508		50.8			6,57													
ADSPPC7053		53.0			6,26													
ADSPPC7054		54.0			6,05													
ADSPPC8572		57.2			15,36													
ADSPPC8603		60.3			14,75													
ADSPPC8635		63.5			14,45													
ADSPPC8066	C8	66.0	121	93	13,96	ADP8000000	P8	122	94	30	5	14,84	ADVTC08000	TCEI8	2 x M6x90	ADSRP06000	RP	2
ADSPPC8070		70.0			13,50													
ADSPPC8073		73.0			13,05													
ADSPPC8761		76.1			12,44													

MATERIALE CORPO COLLARE : POLIPROPILENE - MATERIALE PIASTRA : ACCIAIO ZINCATO - MATERIALE VITI E RONDELLE : ACCIAIO 8.8  
CLAMP BODY MATERIAL : POLYPROPYLENE - PLATE MATERIAL : ZINC PLATED STEEL - SCREW AND WASHER MATERIAL : STEEL 8.8