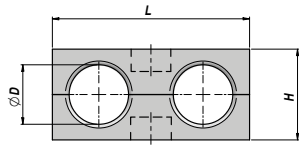
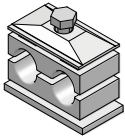


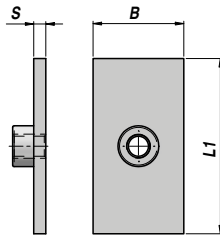
**ADD**

**NEW!**

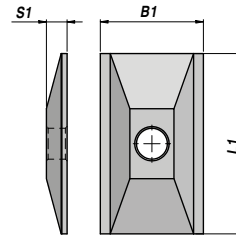
COLLARE FERMATUBO - SERIE DOPPIA "CF" (POLIPROPILENE)  
CLAMP - "CF" DOUBLE SERIES (POLYPROPYLENE)



CF1-5



P CF1-5



PS CF1-5

CORPO COLLARE CLAMP BODY						PIASTRA A SALDARE WELD PLATE					PIASTRA SUPERIORE UPPER PLATE					VITE TE HEXAGON HEAD BOLT ISO 4014 / 4017				
Codice Code	Tipo Type	ØD mm	L	H	kg x100	Codice Code	Tipo Type	L1	B	S	kg x100	Codice Code	Tipo Type	L1	B1	S1	kg x100	Codice Code	Tipo Type	Size
ADDCF10060		6.0			1,60	ADPCF01000	P CF1	37	30	3	2,94	ADPSCF1000	PS CF1	34.5	30	7	2,31	ADVTECF0100	TE CF1	1 x M6x35
ADDCF10064		6.4			1,62															
ADDCF10080		8.0			1,52															
ADDCF10095	CF1	9.5	36	27	1,59															
ADDCF10100		10.0			1,38															
ADDCF10120		12.0			1,22															
ADDCF10127		12.7			1,18															
ADDCF20127		12.7			2,13	ADPCF02000	P CF2	55	30	5	6,60	ADPSCF2000	PS CF2	52.0	30	7	3,52	ADVTECF0200	TE CF2	1 x M8x35
ADDCF20135		13.5			2,33															
ADDCF20140		14.0			2,03															
ADDCF20150	CF2	15.0	54	27	1,93															
ADDCF20160		16.0			1,78															
ADDCF20172		17.2			1,64															
ADDCF20180		18.0			1,54															
ADDCF30190		19.0			3,36	ADPCF03000	P CF3	70	30	5	8,33	ADPSCF3000	PS CF3	64.0	30	7	4,41	ADVTECF0300	TE CF3	1 x M8x45
ADDCF30200		20.0			3,18															
ADDCF30213		21.3			2,97															
ADDCF30220	CF3	22.0	67	37	2,84															
ADDCF30230		23.0			2,72															
ADDCF30250		25.0			2,33															
ADDCF30254		25.4			2,31															
ADDCF40260		26.0			4,54	ADPCF04000	P CF4	85	30	5	10,08	ADPSCF4000	PS CF4	79.0	30	7	5,45	ADVTECF0400	TE CF4	1 x M8x50
ADDCF40269	CF4	26.9			4,33															
ADDCF40280		28.0	81	42	4,03															
ADDCF40300		30.0			3,58															
ADDCF50320		32.0			7,53	ADPCF05000	P CF5	110	30	5	12,85	ADPSCF5000	PS CF5	102.5	30	7	7,16	ADVTECF0500	TE CF5	1 x M8x60
ADDCF50337		33.7			7,13															
ADDCF50350	CF5	35.0	106	53	6,85															
ADDCF50380		38.0			6,03															
ADDCF50400		40.0			5,58															
ADDCF50420		42.4																		

MATERIALE CORPO COLLARE : POLIPROPILENE - MATERIALE PIASTRE : ACCIAIO ZINCATO - MATERIALE VITI : ACCIAIO 8.8  
CLAMP BODY MATERIAL : POLYPROPYLENE - PLATES MATERIAL : ZINC PLATED STEEL - SCREW MATERIAL : STEEL 8.8