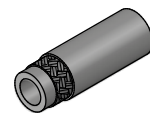
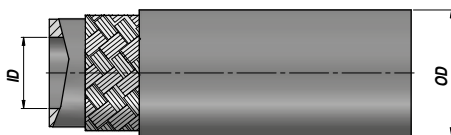


TUBO FLESSIBILE - EXCEED EN 857-1SC ISO 7751
FLEXIBLE HYDRAULIC HOSE - EXCEED EN 857-1SC ISO 7751

NEW! 1SC-JET



Codice Code	ID				OD mm	P MAX bar		BR min mm	Temperatura d'esercizio Working temperature	Colore Colour	Ghiera Ferrule	kg x 100 m
	size	inch	mm	DN		Esercizio Work	Scoppio Burst					
FGFB001K04	04	1/4"	6.4	06	12.4	250	1000	75	-40°C - +135°C (155° intermittente - intermittent)	Blu Blue	RPG001C.04	18,20
FGFB001K05	05	5/16"	8.0	08	14.0	250	1000	85			RPG001C.05	20,30
FGFB001K06	06	3/8"	9.5	10	15.6	250	1000	90			RPG001C.06	25,60
FGFB001K08	08	1/2"	12.7	13	18.7	250	1000	130			RPG001C.08	34,10

BR min = Raggio minimo di curvatura - Minimum bending radius

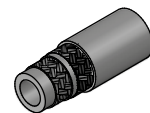
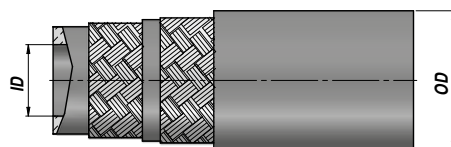
Sottostrato - Internal hose : Gomma sintetica resistente all'acqua, emulsioni acqua-sapone e acqua-glicole - Water, water-soap based, glycol-water based resistant synthetic rubber

Rinforzo - Reinforcement : 1 Treccia in acciaio ad alta tenacità - 1 High tensile steel wire braid

Copertura - Cover : Gomma liscia sintetica resistente agli oli, all'abrasione e agli agenti atmosferici - Oil, abrasion and weather resistant smooth synthetic rubber

TUBO FLESSIBILE - EXCEED EN 857-2SC ISO 7751
FLEXIBLE HYDRAULIC HOSE - EXCEED EN 857-2SC ISO 7751

NEW! 2SC-JET



Codice Code	ID				OD mm	P MAX bar		BR min mm	Temperatura d'esercizio Working temperature	Colore Colour	Ghiera Ferrule	kg x 100 m
	size	inch	mm	DN		Esercizio Work	Scoppio Burst					
FGFB002K04	04	1/4"	6.4	06	13.4	400	1600	85	-40°C - +135°C (155° intermittente - intermittent)	Blu Blue	RPG001C.04	28,10
FGFB002K05	05	5/16"	8.0	08	15.0	400	1600	85			RPG001C.05	32,70
FGFB002K06	06	3/8"	9.5	10	17.4	400	1600	90			RPG001C.06	41,80
FGFB002K08	08	1/2"	12.7	13	20.6	400	1600	130			RPG001C.08	57,40

BR min = Raggio minimo di curvatura - Minimum bending radius

Sottostrato - Internal hose : Gomma sintetica resistente all'acqua, emulsioni acqua-sapone e acqua-glicole - Water, water-soap based, glycol-water based resistant synthetic rubber

Rinforzo - Reinforcement : 2 Treccia in acciaio ad alta tenacità - 2 High tensile steel wire braid

Copertura - Cover : Gomma liscia sintetica resistente agli oli, all'abrasione e agli agenti atmosferici - Oil, abrasion and weather resistant smooth synthetic rubber