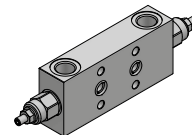
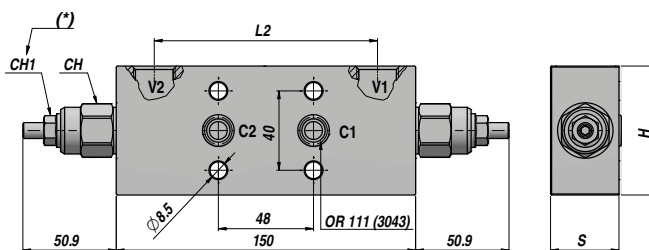
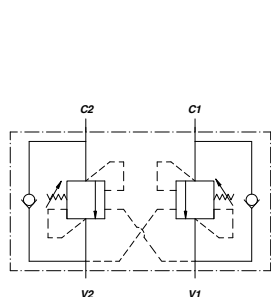


VALVOLA OVERCENTER
OVERCENTER VALVE

DOPPIO EFFETTO
DOUBLE ACTING

NEW!

VODL/N1116



Codice Code	V1-V2 BSP	C1-C2	M	Q MAX l/min	P MAX bar	PILOT RATIO	Tipo Type	L2	CH	CH1	H	S	kg
V555122106	3/8"	Ø8.5	-	60	350	1:4	VODL/N1116/38F2/G5.p4/ac	112	24	13	55.0	29.5	1,80
V555132107	1/2"	Ø8.5	-	60	350	1:4	VODL/N1116/12F2/G5.p4/ac	112	24	13	65.0	34.5	2,40

(*)= CH1 : Coppia di serraggio - Tightening torque : Max 15 Nm

MOLLA - SPRING : Type "G5" 50-350 bar (Taratura standard - Standard setting 350 bar)

A RICHIESTA - ON REQUEST :

MOLLA - SPRING : Type "G3" 5-210 bar (Taratura standard - Standard setting 150 bar)

RAPPORTO DI PILOTAGGIO - PILOT RATIO : 1:8

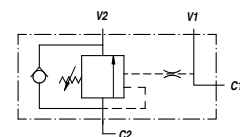
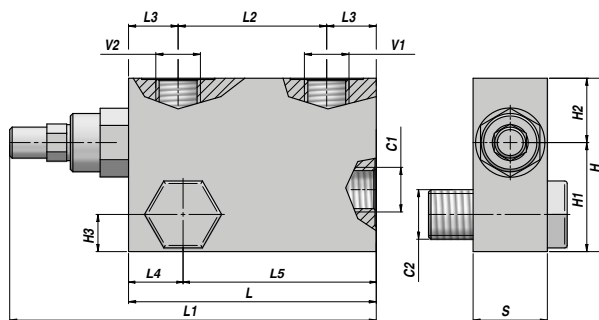
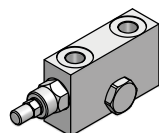
MATERIALE CORPO : ACCIAIO
BODY MATERIAL : STEEL

FLANGIABILE
FACE MOUNTING

VALVOLA OVERCENTER
OVERCENTER VALVE

SEMPLICE EFFETTO
SINGLE ACTING

VBCD/A SE-FLV



Codice Code	V1 - V2 BSP	C1 - C2 BSP	Q MAX l/min	P MAX bar	PILOT RATIO	Tipo Type	L	L1	L2	L3	L4	L5	H1	H2	H3	H	S	kg
V2190.0392FLV	3/8"	3/8"	40	350	1:4.5	VBCD/A SE-FLV 3/8"	100	150	60	20	22	78	40	30	15	70	30	1,35
V2190.0412FLV	1/2"	1/2"	60	350	1:4.5	VBCD/A SE-FLV 1/2"	100	150	60	20	24	76	40	30	15	70	30	1,31

Taratura standard - Standard setting : 320 bar

Taratura minima - Minimum setting : 200 bar

MATERIALE CORPO : ACCIAIO
BODY MATERIAL : STEEL

MONTAGGIO SU CILINDRO
CYLINDER MOUNTING