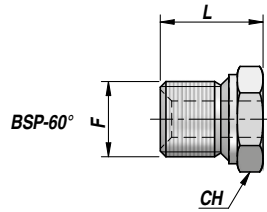


RV501

RV502

NEW!



Codice Code	F BSP	CH	L	kg x100
RV501.0400	1/4"	19	18~	2,00
RV501.0600	3/8"	22	20~	3,60
RV501.0800	1/2"	27	23~	5,00
RV501.1200	3/4"	32	26~	7,60
RV501.1600	1"	41	30~	15,40
RV501.2000	1"1/4	50	32~	26,60

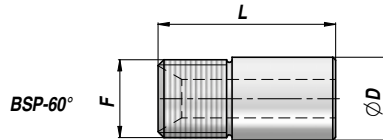
Codice Code	F	CH	L	kg x100
RV502.1415	M14x1.5	19	19~	2,20
RV502.1615	M16x1.5	22	21~	2,60
RV502.1815	M18x1.5	24	22~	4,40
RV502.2215	M22x1.5	27	24~	5,80

MATERIALE : ACCIAIO
MATERIAL : STEEL

RV511

RV512

NEW!



Codice Code	F BSP	ØD	L	kg x100
RV511.0400	1/4"	14	25~	2,00
RV511.0600	3/8"	17	35~	3,80
RV511.0800	1/2"	21	35~	5,60
RV511.1200	3/4"	28	41~	9,40
RV511.1600	1"	35	41~	15,20
RV511.2000	1"1/4	43	45~	26,30

Codice Code	F	ØD	L	kg x100
RV512.1415	M14x1.5	14	30~	2,00
RV512.1615	M16x1.5	16	31~	3,00
RV512.1815	M18x1.5	18	35~	4,00
RV512.2215	M22x1.5	21	37~	5,50

MATERIALE : ACCIAIO
MATERIAL : STEEL