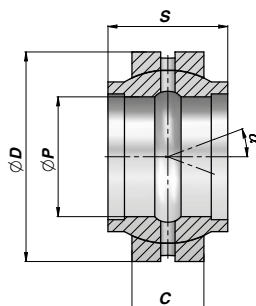
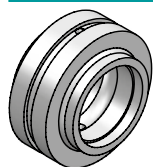


GE LO

**SNODO SFERICO RADIALE RICHIEDENTE MANUTENZIONE
RADIAL BALL-JOINT REQUIRING MAINTENANCE**



TYPE LO

Codice Code Type LO	ØP	ØD	S	C	α	FC (kN)	kg
CGE0001445 NEW!	12	22	12	7	4	10.8	0,02
CGE0001446 NEW!	16	28	16	9	4	17.6	0,03
CGE0001447	20	35	20	12	4	30.0	0,07
CGE0001448	25	42	25	16	4	48.0	0,12
CGE0001449	32	52	32	18	4	67.0	0,20
CGE0001450	40	62	40	22	4	100.0	0,34
CGE0001451	50	75	50	28	4	156.0	0,56
CGE0001452	63	95	63	36	4	255.0	1,20
CGE0001453 NEW!	70	105	70	40	4	315.0	1,70
CGE0001454 NEW!	80	120	80	45	4	400.0	2,40
CGE0001455 NEW!	90	130	90	50	4	490.0	3,20
CGE0001456 NEW!	100	150	100	55	4	610.0	4,80
CGE0001457 NEW!	110	160	110	55	4	655.0	5,80
CGE0001458 NEW!	125	180	125	70	4	950.0	8,50

FC = CARICO DINAMICO AMMESSO - MAX DYNAMIC LOAD

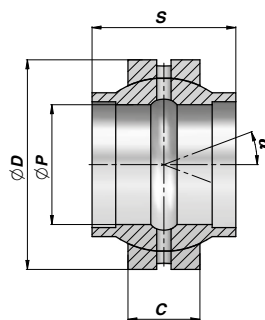
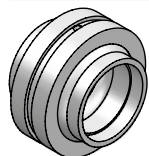
ACCOPIAMENTO - COUPLING: ACCIAIO/ACCIAIO - STEEL/STEEL

MATERIALE : ACCIAIO ISO 12240-1 SERIE W

MATERIAL : STEEL ISO 12240-1 SERIES W

GE HO2RS

**SNODO SFERICO RADIALE RICHIEDENTE MANUTENZIONE
RADIAL BALL-JOINT REQUIRING MAINTENANCE**



TYPE HO...2RS

Codice Code Type HO...2RS	ØP	ØD	S	C	α	FC (kN)	kg
CGE0001461	20	35	24	12	3	30	0,05
CGE0001462	25	42	29	16	3	48	0,10
CGE0001463	30	47	30	18	3	62	0,14
CGE0001464	35	55	35	20	3	80	0,24
CGE0001465	40	62	38	22	3	100	0,29
CGE0001466	45	68	40	25	3	127	0,43
CGE0001467	50	75	43	28	3	156	0,54
CGE0001468	60	90	54	36	3	245	1,10
CGE0001469	70	105	65	40	3	315	1,60
CGE0001470	80	120	74	45	3	400	2,40

FC = CARICO DINAMICO AMMESSO - MAX DYNAMIC LOAD

ACCOPIAMENTO - COUPLING: ACCIAIO/ACCIAIO - STEEL/STEEL

MATERIALE : ACCIAIO

MATERIAL : STEEL