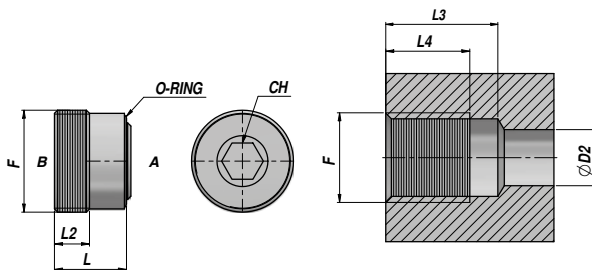
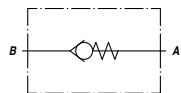
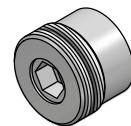


VALVOLA UNIDIREZIONALE (TENUTA A CONO)  
CHECK VALVE (POPPET TYPE)

NEW!

VRR1



Codice Code	F BSP	Q MAX l/min	P MAX bar	Tipo Type	L	L2	L3	L4	ØD2	CH	O-ring	kg x 100
VCG303.010000	1/4"	20	350	VRR1 010	10.0	6	24.0	21.5	7	5	9x1	1,00
VCG303.020000	3/8"	50	350	VRR1 020	11.5	7	25.5	23.0	9	6	10x1.5	2,00
VCG303.030000	1/2"	80	350	VRR1 030	13.5	8	30.5	28.0	12	8	14.1x1.6	3,00

Pressione di apertura - Opening pressure : bar 0.5

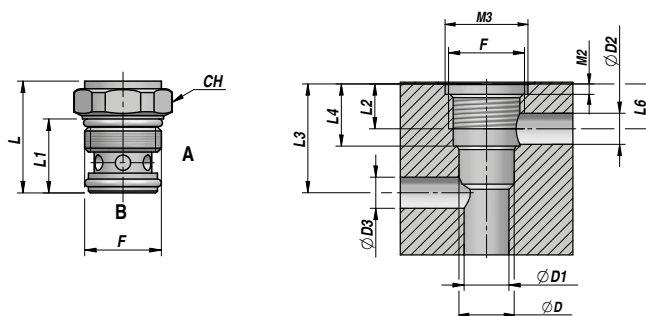
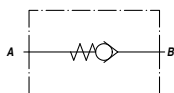
MATERIALE CORPO : ACCIAIO  
BODY MATERIAL : STEEL

CARTUCCIA  
CARTRIDGE

VALVOLA UNIDIREZIONALE  
CHECK VALVE

NEW!

VUC



Codice Code	F	Q MAX l/min	P MAX bar	Tipo Type	L	L1	ØD (H7)	L2	L3	L4	L5	L6	ØD1 max	ØD2 max	ØD3	M2	M3	CH	kg x 100
VCS302.200400	3/4-16 UNF	20	350	VUC 020	39.5	27.5	12.7	15	32	20.6	31	13	11	9	9.0	2.7	20.5	22	5,30
VCM302.400050	M22x1.5	40	300	VUC 040	34.5	28.0	19.0	13	33	21.0	32	15	18	9	9.5	3.3	23.0	27	7,50

VUC 020 : TENUTA A SFERA - BALL TYPE

VUC 040: TENUTA A CONO - POPPET TYPE

Pressione di apertura - Opening pressure : VUC 020: 4 bar - VUC 040: 0.5 bar

MATERIALE CORPO : ACCIAIO  
BODY MATERIAL : STEEL

CARTUCCIA  
CARTRIDGE