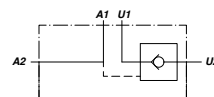
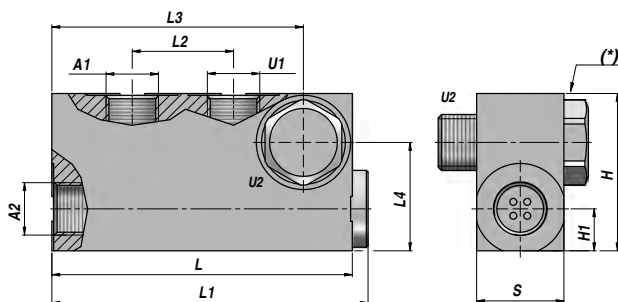
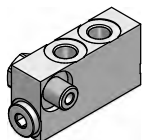


VRSE...CIL

SEMPLICE EFFETTO
SINGLE ACTING

VALVOLA DI BLOCCO PILOTATA (TENUTA A CONO)
PILOT OPERATED CHECK VALVE (POPPET TYPE)



Codice Code	A1 - U1 BSP	A2 - U2 BSP	Q MAX l/min	P MAX bar	PILOT RATIO	Tipo Type	L	L1	L2	L3	L4	H1	H	S	kg
VSG325.B10450	1/4"	1/4"	20	300	1:4.9	VRSE 010 CIL	84	88.5	24	68.5	27	10	40	20	0,45
VSG325.B20490	3/8"	3/8"	20	300	1:4.9	VRSE 020 CIL	86	90.5	26	72.0	31	12	45	25	0,65

Pressione di apertura - Opening pressure : 1 bar

(*) = Coppia di serraggio - Tightening torque

VRSE 010 CIL 1/4" = 40 Nm - VRSE 010 CIL 3/8" = 55 Nm

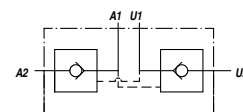
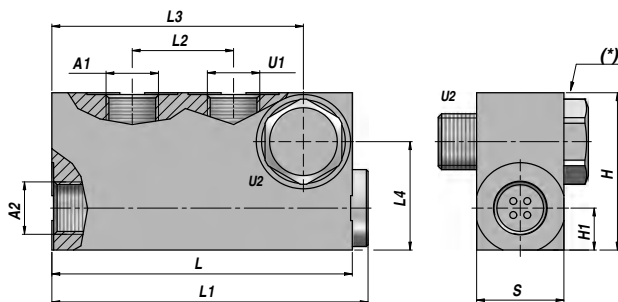
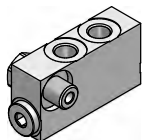
MATERIALE CORPO : ACCIAIO
BODY MATERIAL : STEEL

MONTAGGIO SU CILINDRO
CYLINDER MOUNTING

VRDE...CIL

DOPPIO EFFETTO
DOUBLE ACTING

VALVOLA DI BLOCCO PILOTATA (TENUTA A CONO)
PILOT OPERATED CHECK VALVE (POPPET TYPE)



Codice Code	A1 - U1 BSP	A2 - U2 BSP	Q MAX l/min	P MAX bar	PILOT RATIO	Tipo Type	L	L1	L2	L3	L4	H1	H	S	kg
VSG326.B10450	1/4"	1/4"	20	300	1:4.9	VRDE 010 CIL	84	88.5	24	68.5	27	10	40	20	0,45
VSG326.B20490	3/8"	3/8"	20	300	1:4.9	VRDE 020 CIL	86	90.5	26	72.0	31	12	45	25	0,65

Pressione di apertura - Opening pressure : 1 bar

(*) = Coppia di serraggio - Tightening torque

VRDE 010 CIL 1/4" = 40 Nm - VRDE 010 CIL 3/8" = 55 Nm

MATERIALE CORPO : ACCIAIO
BODY MATERIAL : STEEL

MONTAGGIO SU CILINDRO
CYLINDER MOUNTING