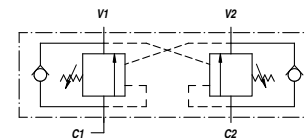
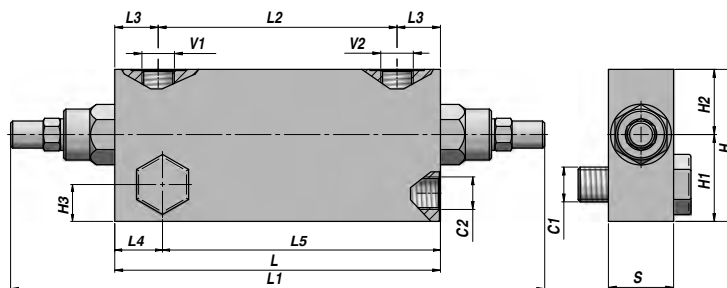
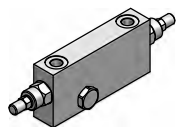


VBCD/A DE-FLV

DOPPIO EFFETTO
DOUBLE ACTING

VALVOLA OVERCENTER
OVERCENTER VALVE



Codice Code	V1 - V2 BSP	C1 - C2 BSP	Q MAX l/min	P MAX bar	PILOT RATIO	Tipo Type	L	L1	L2	L3	L4	L5	H1	H2	H3	H	S	kg
V2290.0422FLV	3/8"	3/8"	40	350	1:4.5	VBCD/A DE-FLV 3/8"	150	250	110	20	22	128	44	26	17	70	30	2,41
V2290.0432FLV	1/2"	1/2"	60	350	1:4.5	VBCD/A DE-FLV 1/2"	150	250	110	20	24	126	50	30	19	80	30	2,70

Taratura standard - Standard setting : 320 bar

Taratura minima - Minimum setting : 200 bar

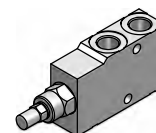
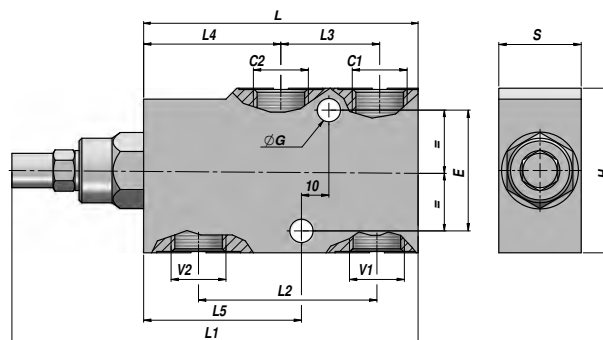
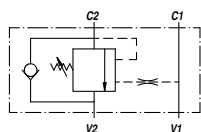
MATERIALE CORPO : ACCIAIO
BODY MATERIAL : STEEL

MONTAGGIO SU CILINDRO
CYLINDER MOUNTING

VBCD/A SE

SEMPLICE EFFETTO
SINGLE ACTING

VALVOLA OVERCENTER
OVERCENTER VALVE



Codice Code	V1 - V2 BSP	C1 - C2 BSP	Q MAX l/min	P MAX bar	PILOT RATIO	Tipo Type	L	L1	L2	L3	L4	L5	ØG	E	H	S	kg
V2190.A400	1/4"	1/4"	25	350	1:4.5	VBCD/A SE 1/4"	76	132	49.0	25	39.0	41.5	6,5	28	55	30	0,97
V2190.A600	3/8"	3/8"	40	350	1:4.5	VBCD/A SE 3/8"	100	149	60.0	30	50.0	55.0	8,5	44	60	30	1,26
V2190.A800	1/2"	1/2"	60	350	1:4.5	VBCD/A SE 1/2"	100	149	65.0	36	50.0	57.5	8,5	44	60	30	1,20
V2190.A120	3/4"	3/4"	100	350	1:5.5	VBCD/A SE 3/4"	127	187	85.0	46	62.5	75.0	8,5	44	80	35	2,37
V2190.A160	1"	1"	150	350	1:5.5	VBCD/A SE 1"	156	213	109.5	70	63.0	75.0	10,5	70	90	50	4,64

Taratura standard - Standard setting : 320 bar

Taratura minima - Minimum setting : 200 bar

MATERIALE CORPO : ACCIAIO
BODY MATERIAL : STEEL

MONTAGGIO IN LINEA
LINE MOUNTING