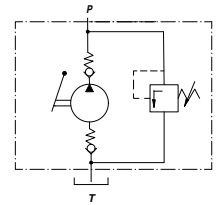
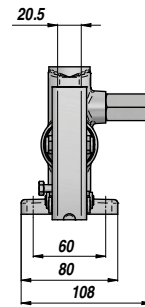
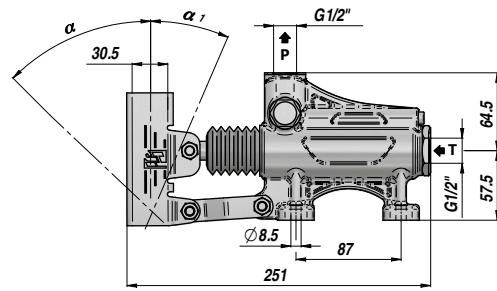
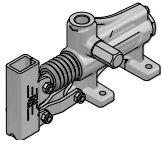


**PAM-SV 40** **NEW!**

POMPA A MANO CON V.M.P.  
HAND PUMP WITH RELIEF VALVE

NON PREDISPOSTA PER SERBATOIO  
NOT SUITABLE FOR OIL TANK



Codice Code	Tipo Type	cm3/ciclo cm3/cycle	P MAX bar	$\alpha$	$\alpha_1$	Temperatura d'esercizio Working Temperature	kg
PAM0144005	PAM-SV 40	42	280	50°	20°	-20°C +80°C	3,36

Funzionamento D.E. per cilindro S.E. - Double-stroke for a S.A. cylinder

A RICHIESTA - ON REQUEST:

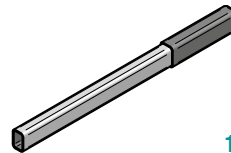
PAMX-SV = POMPA CON SUPPORTO PER LEVA TONDA - HAND PUMP WITH ROUND LEVER HOLDER

FPM = GUARNIZIONI IN VITON - VITON SEALS

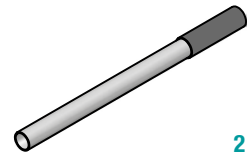
VMQ = GUARNIZIONI IN SILICONE - FLUORINE-SILICONE SEALS

**LEVA - LEVERS**

Codice Code	Dimensioni Sizes	TYPE	kg
* PAM0290000	20 x 30 x 600	1	0,71
PAM0290900	20 x 30 x 900	1	1,41
PAM0291000	20 x 30 x 1000	1	1,55
PM00290100	Ø27 x 600 ( PAMX )	2	0,91



1



2

\* LEVA STANDARD - STANDARD HAND LEVER

**KIT RICAMBI - SPARE PARTS**

Codice Code	Descrizione Description	N°
PAMJVMP000	Kit VMP Relief Valve Kit	1
PAMJV02000	Kit aspirazione Suction valve kit	2
PAMJB02040	Kit bielle Conrod kit	3
PAMJ010001	Supporto leva Hand lever holder	4
PAMJPS4045	Kit pistone+stelo Rod Piston assembled kit	5
PAMJ020015	Soffietto Bellow	6
PAMGTV0040	Kit guarnizioni standard Standard seal kits	7

