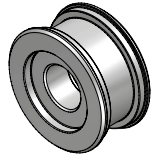
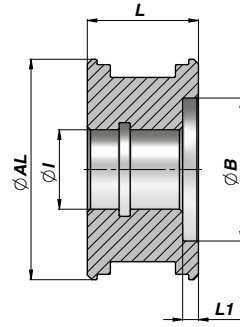


PISTONE
PISTON

CTLM

Series C200



Codice Code	ØAL	ØI	L	ØB	L1	kg	Confezione Box	Pz Pcs	Set guarnizioni Seal kits
CTLM040015027	40	15	27	27	5	0,15	Z50CTLM040015	50	GKGCTLM040015
CTLM050021030	50	21	30	36	5	0,25	Z50CTLM050021	50	GKGCTLM050021
CTLM060025035	60	25	35	45	5	0,40	Z25CTLM060025	25	GKGCTLM060025
CTLM070025035	70	25	35	45	5	0,59	Z25CTLM070025	25	GKGCTLM070025
CTLM080028040	80	28	40	50	6	0,95	Z20CTLM080028	20	GKGCTLM080028
CTLM100035040	100	35	40	60	6	1,60	Z10CTLM100035	10	GKGCTLM100035

MATERIALE : ACCIAIO 9SMn28 - UNI C40
MATERIAL : STEEL 9SMn28 - UNI C40

GUARNIZIONI : VEDI PAGINA 83
SEALS : SEE PAGE 83

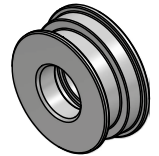
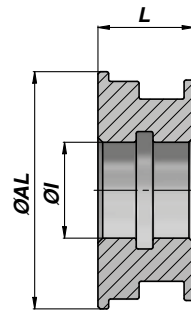
A RICHIESTA : SET GUARNIZIONI IN VITON
ON REQUEST : VITON SEAL KITS

PISTONE PER CILINDRO SEMPLICE EFFETTO
PISTON FOR SINGLE ACTING CYLINDER

NEW!

CTSE

Series M250



Codice Code	ØAL	ØI	L	kg	Confezione Box	Pz Pcs	Set guarnizioni Seal kits
CTSE040015	40	15	20	0,11	Z00CTSE040015	100	GKGCTSE040015
CTSE050020	50	20	25	0,21	Z50CTSE050020	50	GKGCTSE050020
CTSE060020	60	20	25	0,35	Z25CTSE060020	25	GKGCTSE060020
CTSE063024	63	24	25	0,35	Z25CTSE063024	25	GKGCTSE063024
CTSE070027	70	27	28	0,45	Z25CTSE070027	25	GKGCTSE070027
CTSE080027	80	27	28	0,66	Z20CTSE080027	20	GKGCTSE080027
CTSE090033	90	33	30	0,93	Z20CTSE090033	20	GKGCTSE090033
CTSE100033	100	33	30	1,23	Z10CTSE100033	10	GKGCTSE100033

MATERIALE : ACCIAIO 9SMn28 - UNI C40
MATERIAL : STEEL 9SMn28 - UNI C40

GUARNIZIONI : VEDI PAGINA 84
SEALS : SEE PAGE 84