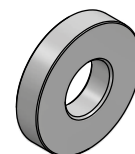
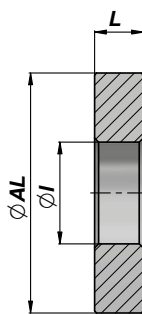


ANELLO ANTERIORE PER CILINDRO CON SENSORE INDUTTIVO
FRONT RING FOR CYLINDER WITH INDUCTIVE SENSOR

NEW!

CASPA



Codice Code	ØAL	ØI	L	kg	Confezione Box	Pz Pcs
CASPA04001712	40	17	12	0,09	Z00CASPA040017	100
CASPA05002112	50	21	12	0,14	Z00CASPA050021	100
CASPA06002512	60	25	12	0,21	Z00CASPA060025	100
CASPA06302512	63	25	12	0,24	Z50CASPA063025	50
CASPA07002512	70	25	12	0,31	Z50CASPA070025	50
CASPA08002812	80	28	12	0,40	Z50CASPA080028	50
CASPA09003512	90	35	12	0,49	Z25CASPA090035	25
CASPA10003512	100	35	12	0,63	Z25CASPA100035	25

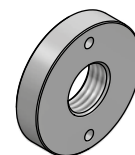
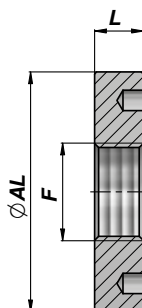
MATERIALE : ACCIAIO 9SMn28

MATERIAL : STEEL 9SMn28

ANELLO POSTERIORE PER CILINDRO CON SENSORE INDUTTIVO
REAR RING FOR CYLINDER WITH INDUCTIVE SENSOR

NEW!

CASPP



Codice Code	ØAL	F	L	kg	Confezione Box	Pz Pcs
CASPP040M1612	40	M16x1.5	12	0,10	Z00CASPP040M16	100
CASPP050M2012	50	M20x1.5	12	0,15	Z00CASPP050M20	100
CASPP060M2412	60	M24x2	12	0,22	Z00CASPP060M24	100
CASPP063M2412	63	M24x2	12	0,25	Z50CASPP063M24	50
CASPP070M2412	70	M24x2	12	0,31	Z50CASPP070M24	50
CASPP080M2712	80	M27x2	12	0,41	Z50CASPP080M27	50
CASPP090M3312	90	M33x2	12	0,51	Z25CASPP090M33	25
CASPP100M3312	100	M33x2	12	0,65	Z25CASPP100M33	25

MATERIALE : ACCIAIO 9SMn28

MATERIAL : STEEL 9SMn28