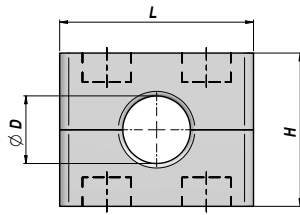
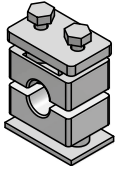


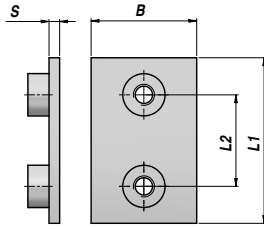
ADSCP

NEW!

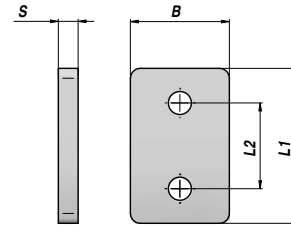
COLLARE FERMATUBO - SERIE PESANTE (POLIPROPILENE)
CLAMP - HEAVY SERIES (POLYPROPYLENE)



CP1-5



P CP1-5



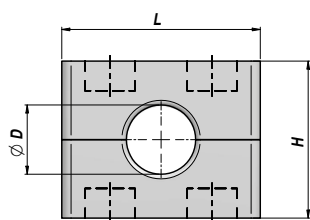
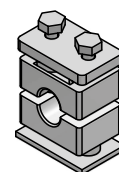
PS CP1-5

CORPO COLLARE CLAMP BODY						PIASTRA A SALDARE WELD PLATE						PIASTRA SUPERIORE UPPER PLATE						VITE TE-CP HEXAGON HEAD BOLT ISO 4014 / 4017				
Codice Code	Tipo Type	ØD mm	L	H	kg x100	Codice Code	Tipo Type	L1	L2	B	S	kg x100	Codice Code	Tipo Type	L1	L2	B	S	kg x100	Codice Code	Tipo Type	Size
ADSPPCP01006		6.0			3,00	ADPCP0100000	P CP1	74	33	30	8	14,80	ADPSCP010000	PS CP1	56	33	30	8	9,22	ADVTECP010000	TE CP1	2 x M10x45
ADSPPCP01064		6.4			2,99																	
ADSPPCP01008		8.0			2,88																	
ADSPPCP01095		9.5			2,91																	
ADSPPCP01010		10.0			2,90																	
ADSPPCP01012		12.0			2,84																	
ADSPPCP01127		12.7			2,92																	
ADSPPCP01135	CP1	13.5	57	33	2,81																	
ADSPPCP01014		14.0			2,76																	
ADSPPCP01015		15.0			2,75																	
ADSPPCP01016		16.0			2,71																	
ADSPPCP01172		17.2			2,72																	
ADSPPCP01018		18.0			2,65																	
ADSPPCP01019		19.0			2,64																	
ADSPPCP01020		20.0			2,56																	
ADSPPCP02019		19.0			5,73	ADPCP0200000	P CP2	86	45	30	8	17,19	ADPSCP020000	PS CP2	69	45	30	8	11,85	ADVTECP020000	TE CP2	2 x M10x60
ADSPPCP02020		20.0			5,65																	
ADSPPCP02213		21.3			5,58																	
ADSPPCP02022		22.0			5,44																	
ADSPPCP02025	CP2	25.0	69	49	5,27																	
ADSPPCP02254		25.4			5,24																	
ADSPPCP02269		26.9			5,36																	
ADSPPCP02028		28.0			5,19																	
ADSPPCP02030		30.0			4,95																	
ADSPPCP03030		30.0			7,80	ADPCP0300000	P CP3	100	60	30	8	19,75	ADPSCP030000	PS CP3	84	60	30	8	14,79	ADVTECP030000	TE CP3	2 x M10x70
ADSPPCP03032		32.0			7,59																	
ADSPPCP03337		33.7			7,49																	
ADSPPCP03035		35.0			7,46																	
ADSPPCP03036		36.0			7,28																	
ADSPPCP03038	CP3	38.0	84	60	7,17																	
ADSPPCP03040		40.0			6,87																	
ADSPPCP03042		42.4			6,78																	
ADSPPCP03043		43.0			6,45																	
ADSPPCP03045		45.0			6,38																	

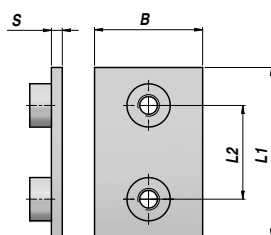
COLLARE FERMATUBO - SERIE PESANTE (POLIPROPILENE)
CLAMP - HEAVY SERIES (POLYPROPYLENE)

NEW!

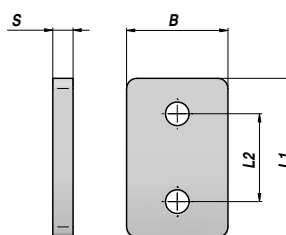
ADSCP



CP1-5



P CP1-5



PS CP1-5

CORPO COLLARE CLAMP BODY						PIASTRA A SALDARE WELD PLATE						PIASTRA SUPERIORE UPPER PLATE						VITE TE-CP HEXAGON HEAD BOLT ISO 4014 / 4017				
Codice Code	Tipo Type	ØD mm	L	H	kg x100	Codice Code	Tipo Type	L1	L2	B	S	kg x100	Codice Code	Tipo Type	L1	L2	B	S	kg x100	Codice Code	Tipo Type	Size
ADSPPCP04337	CP4	33.7	116	88	23,47	ADPCP040000	P CP4	140	90	45	10	48,11	ADSPCP040000	PS CP4	115	90	45	10	37,62	ADVTECP04000	TE CP4	2 x M12x100
ADSPPCP04038		38.0			21,15																	
ADSPPCP04040		40.0			20,80																	
ADSPPCP04424		42.4			20,45																	
ADSPPCP04445		44.5			22,42																	
ADSPPCP04045		45.0			20,00																	
ADSPPCP04483		48.3			19,06																	
ADSPPCP04050		50.0			19,00																	
ADSPPCP04508		50.8			19,00																	
ADSPPCP04053		53.0			18,50																	
ADSPPCP04054		54.0			18,47																	
ADSPPCP04055		55.0			18,20																	
ADSPPCP04056		56.0			18,15																	
ADSPPCP04572		57.2			17,96																	
ADSPPCP04060		60.3			17,33																	
ADSPPCP04635		63.5			16,57																	
ADSPPCP04065	65.0	16,20																				
ADSPPCP04070	70.0	14,97																				
ADSPPCP05603	CP5	60.3	155	118	42,61	ADPCP050000	P CP5	180	122	60	10	84,07	ADSPCP050000	PS CP5	152	122	60	10	64,87	ADVTECP05000	TE CP5	2 x M16x130
ADSPPCP05065		65.0			41,85																	
ADSPPCP05066		66.0			42,02																	
ADSPPCP05070		70.0			40,12																	
ADSPPCP05073		73.0			40,24																	
ADSPPCP05761		76.1			39,80																	
ADSPPCP05080		80.0			37,85																	
ADSPPCP05085		85.0			36,70																	
ADSPPCP05889		88.9			35,24																	
ADSPPCP05090		90.0			34,80																	

MATERIALE CORPO COLLARE : POLIPROPILENE - MATERIALE PIASTRA : ACCIAIO ZINCATO - MATERIALE VITI E RONDELLE : ACCIAIO 8.8
CLAMP BODY MATERIAL : POLYPROPYLENE - PLATE MATERIAL : ZINC PLATED STEEL - SCREW AND WASHER MATERIAL : STEEL 8.8